



17.10.98

Proposed Arrangement of Keel & Bottom Plating S.S. No 295

Scale - $\frac{1}{2}$ inch = one foot

All other scantlings to remain the same
as in S.S.'s Egypt & Arabia nos 285-6

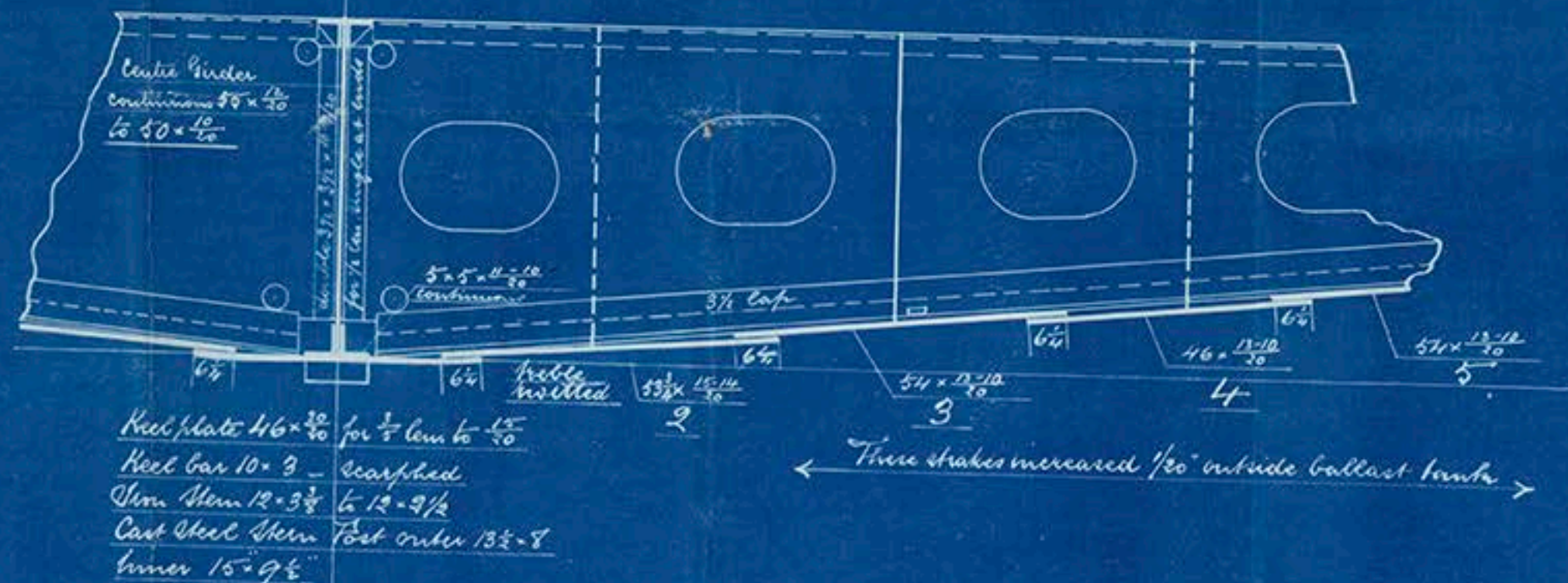
Moulded dimensions 499'9" x 54' x 36'9" to Spar Deck.

To class 100 A 1 Lloyd's Spar Deck
Shell plating to 3 Deck rule.



Spar deck stringer rivetting.

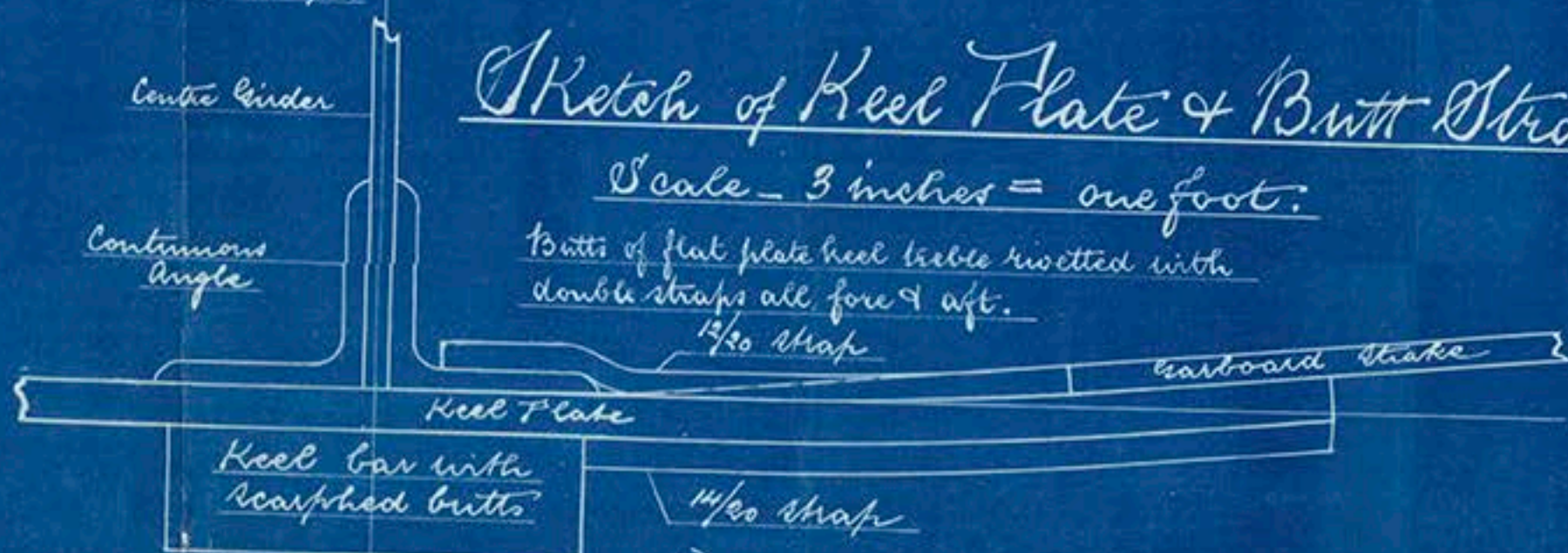
Spar deck stringer plates lapped & quadruple
rivetted for $\frac{1}{4}$ len. amidships; lapped &
double rivetted beyond, instead of double
straps for $\frac{3}{4}$ len. as in nos 285-6.



Sketch of Keel Plate & Butt Straps

Scale - 3 inches = one foot.

Butts of flat plate keel to be rivetted with
double straps all fore & aft.



J.H.
17/10/98



Lloyd's Register
Foundation



Proposed arrangement
of keel & bottom plating
Caird & Co. No 295.

S.S. "Persia"
Cyril report No 12839

