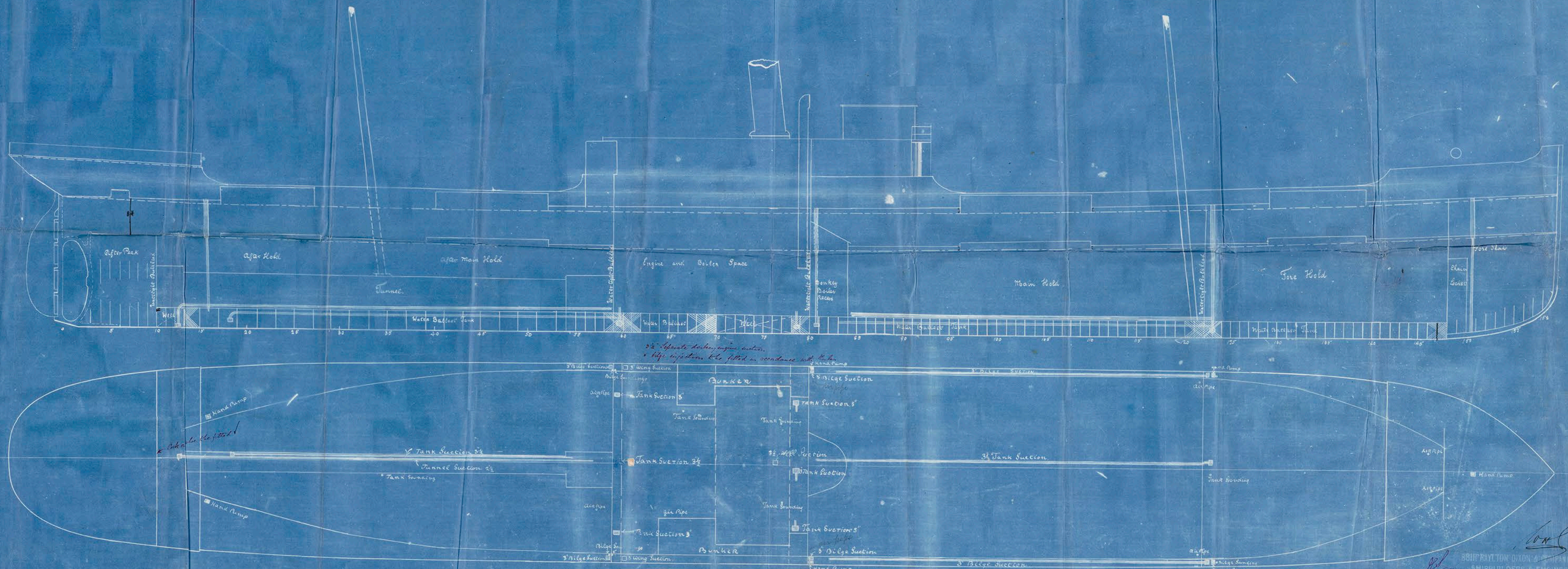




22.7.98

# PUMPING ARRANGEMENT

2700 Tons under deck



SS 460

22.7.98  
32798  
SHIPBUILDERS & ENGINEERS  
CLEVELAND DOCK  
MIDDLESBROUGH  
Photo No. 5012, July 14th 1898





Sir Layton Dixon & Co  
N<sup>o</sup> 460

Pumping plant

Indb Report N<sup>o</sup> 2620



S. I. Mont Blanc

Newcastle Report

N<sup>o</sup> 38290

1<sup>st</sup> Entry report Indb N<sup>o</sup> 2620



© 2018

Lloyd's Register  
Foundation