

Wm Beadmore & Co  
611-612

Arrangement of  
Double Reduction Gear

611-Conte Rosso.

GLASGOW REPORT No. 41720

612  
Conte Verde

GLASGOW REPORT No. 42623

RETAIN<sup>2</sup>

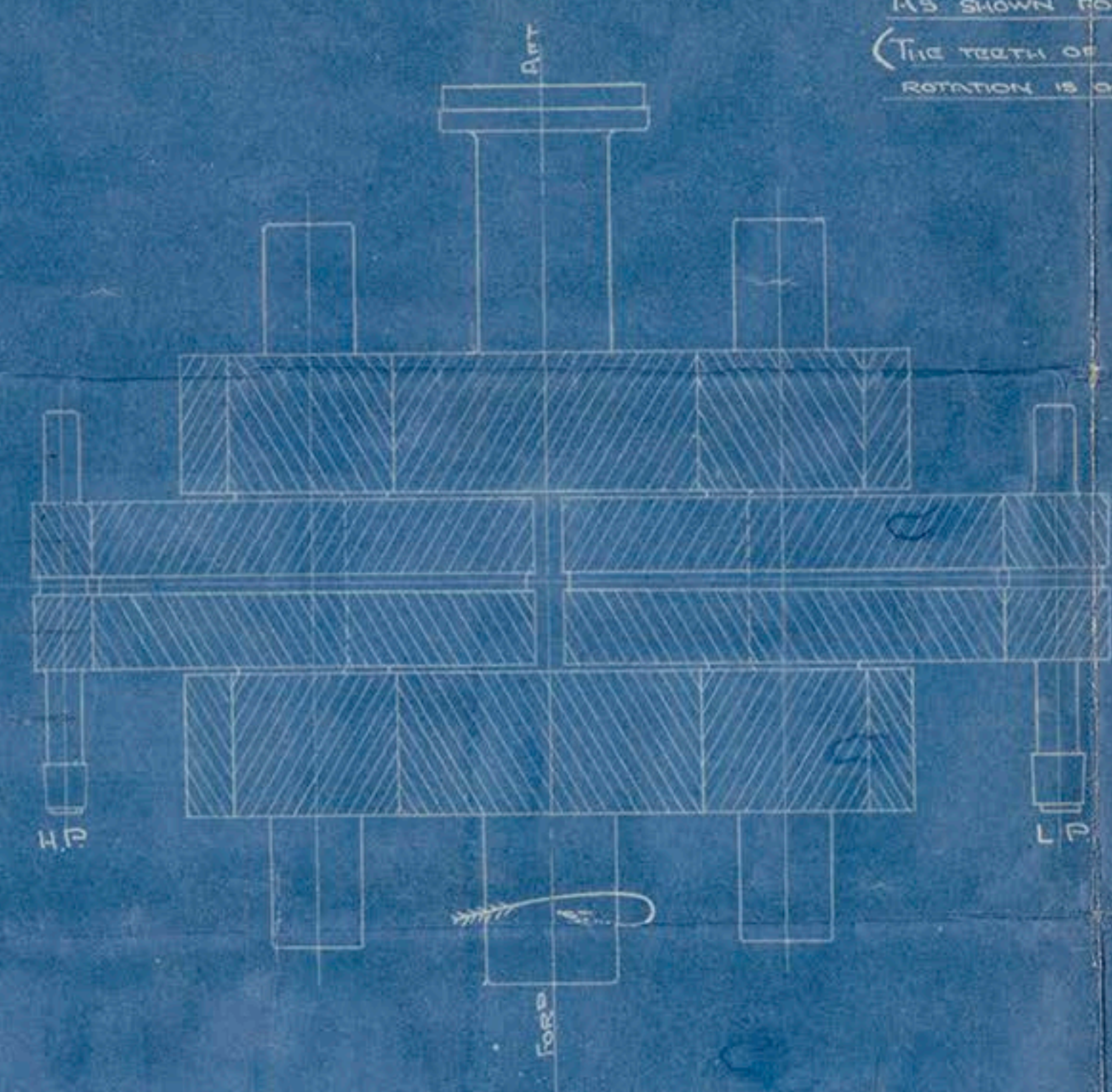
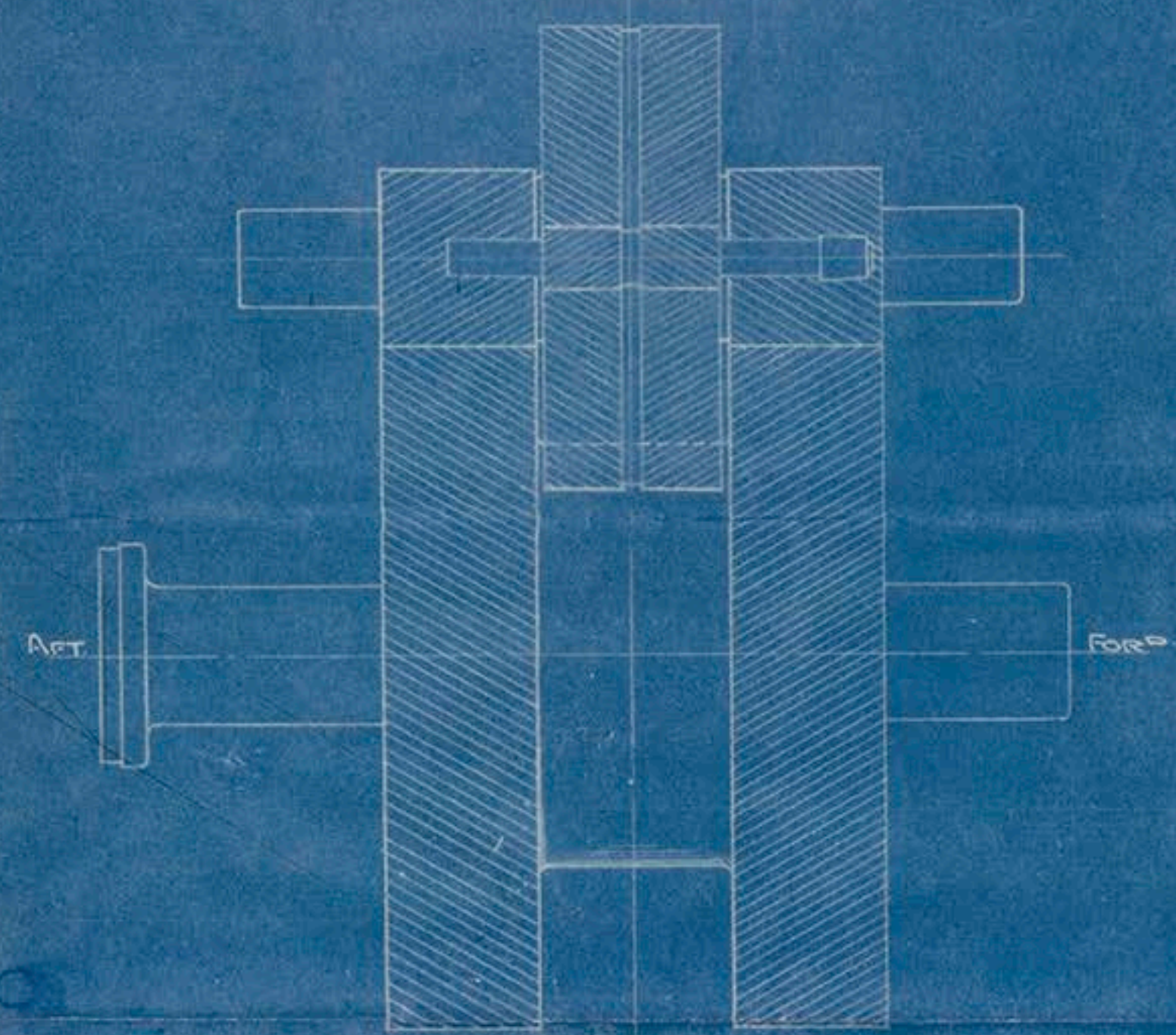
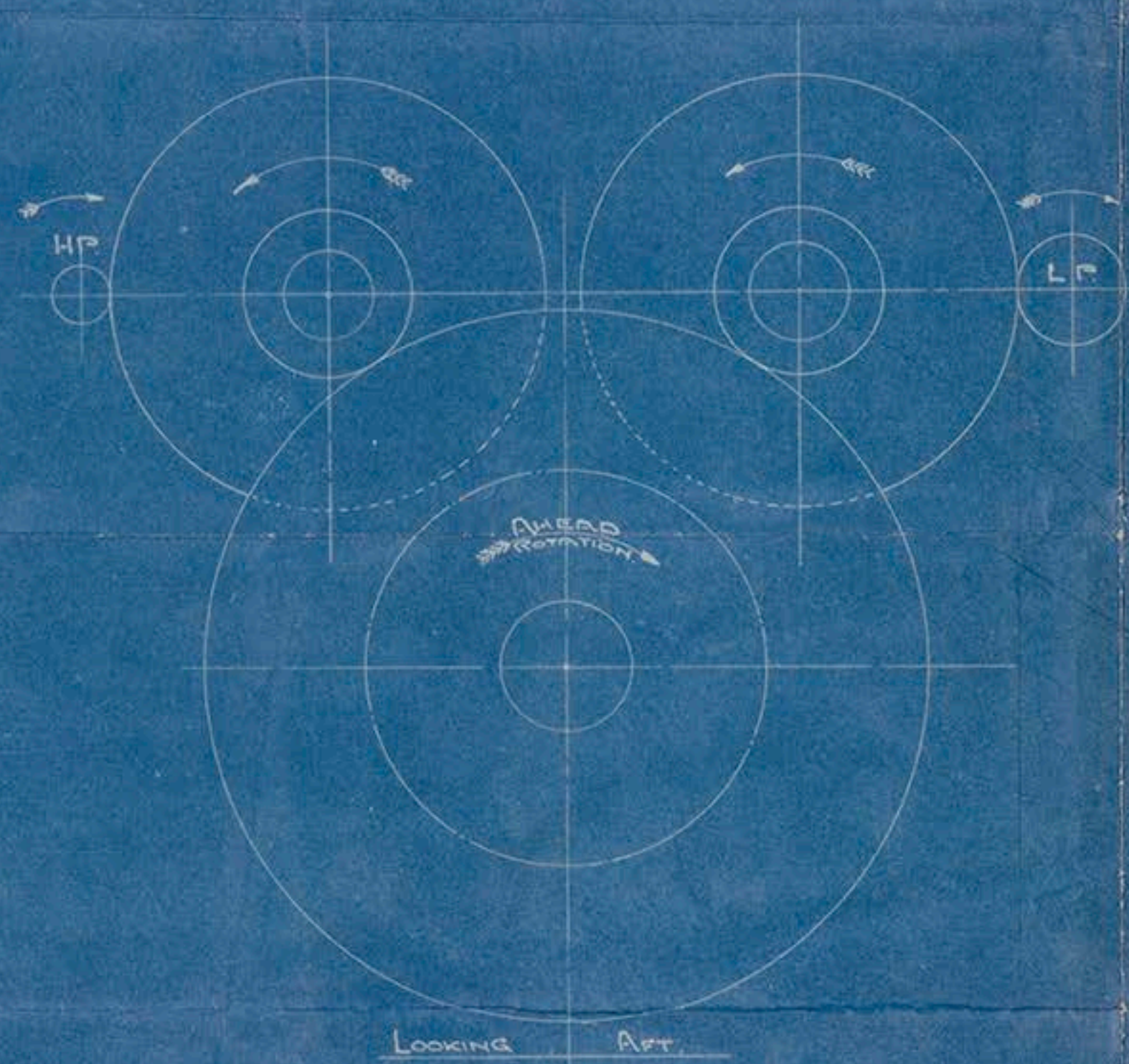


© 2018

Lloyd's Register  
Foundation



1/9/19.



AS SHOWN FOR PORT SIDE.  
(THE TEETH OF STARBOARD SET IS CUT SIMILARLY, BUT  
ROTATION IS OPPOSITE IN DIRECTION)

# ENG. NOS 611-12. KEY PLAN OF REDUCTION GEARING.

SCALE :- 1/2" = 1 FOOT.

ME. 27-8-19

L.H. 1/7/19

WILLIAM BEARDMORE & Co., Ltd.,  
MARINE CONSTRUCTION WORKS,  
DALMUIR.  
**ENCLOSURE.**  
To Messrs. Lloyd's Register  
of Shipping



10.T.  
SK. No. 611-12.