

1-2-12.

Sketch of superstructure showing side view & 1/2



Nº 409

MIDSHIP SECTION

SCALE 1/4" = 1 FOOT

SHOWING PROPOSED REDUCTION IN SCANTINGS OF TOPSIDE DOUBLE PLATING, AND PLATING OF B, C AND D DECK.

NOTE: THE SIZES OF RIVETS, BREADTHS OF LAPS, STRAPS AND LANDINGS WILL BE IN ACCORDANCE WITH THE RULES FOR THE REDUCED THICKNESS OF THE PLATING.
BUTT - RIVETING

KEEL PLATE BUTTS THERE RIVETED THROUGHOUT. NO STRAPS IN WAY OF 3 THICKNESSES. SINGLE STRAPS IN END AT ENDS.

SHELL PLATING STRAKES A TO N INCLUSIVE TO HAVE DOUBLE STRAPS. STRAKE A TO N INCLUSIVE TO HAVE DOUBLE STRAPS. STRAKE O TO Y INCLUSIVE QUADRUPLE LAPS FOR 2 LENGTHS. STRAKE Z TO A, B, C, D, E, F, G, H, I, J, K, L, M, N, O, P, Q, R, S, T, U, V, W, X, Y, Z. BOTH THICKNESSES IN WAY OF DOUBLE PLATING. STRAKE A TO N INCLUSIVE TO HAVE SINGLE STRAPS QUADRUPLE LAPS AT EACH BUTT. THE STRAPS TO EXTEND VERTICALLY TOP & BOTTOM ONE RIVET SPACE. (STRAKE D, E, F, G, H, I, J, K, L, M, N, O, P, Q, R, S, T, U, V, W, X, Y, Z) AND 1/2 IN LATER THICKNESS. BEYOND THE DOUBLED PLATING BUTTS TO BE QUADRUPLE LAPS.

B DECK IN WAY OF DOUBLE PLATING STRAKE A TO N INCLUSIVE TO HAVE SINGLE STRAPS QUADRUPLE LAPS AT EACH BUTT. THE STRAPS TO EXTEND VERTICALLY TOP & BOTTOM ONE RIVET SPACE. (STRAKE D, E, F, G, H, I, J, K, L, M, N, O, P, Q, R, S, T, U, V, W, X, Y, Z) AND 1/2 IN LATER THICKNESS. BEYOND THE DOUBLED PLATING BUTTS TO BE QUADRUPLE LAPS.

C DECK STRAKER TO HAVE DOUBLE STRAPS AND SHIPS QUADRUPLE LAPS ABOVE TREBLE RIV. BELOW AT ENDS BUTTS TO BE QUADRUPLE TO TREBLE LAPS. STRAKES NEXT TO STRAKER QUADRUPLE LAPS AND SHIPS TO TREBLE & DOUBLE LAPS AT ENDS. REMAINING STRAKES TREBLE LAPS AND SHIPS TO DOUBLE AT ENDS.

D DECK STRAKER QUADRUPLE LAPS AND SHIPS TO TREBLE AT ENDS. STRAKER NEXT TO STRAKER QUADRUPLE LAPS AND SHIPS TO TREBLE & DOUBLE LAPS AT ENDS. REMAINING STRAKES TREBLE LAPS AND SHIPS TO DOUBLE AT ENDS.

E F & G DECKS STRAKER TREBLE LAPS THROUGHOUT. STRAKE NEXT STRAKER TREBLE LAPS AND SHIPS TO DOUBLE AT ENDS. REMAINING STRAKES DOUBLE LAPS AND SHIPS TO SINGLE AT ENDS.

INNER BOTTOM CENTER STRAKE QUADRUPLE LAPS THROUGHOUT. REMAINDER (INCLUDING MARGIN) QUADRUPLE LAPS AND SHIPS TO TREBLE AT ENDS.

CENTRE GIRDER DOUBLE STRAPS TREBLE RIV. AND SHIPS QUADRUPLE LAPS AT ENDS. NO STRAPS TO TOP & BOTTOM BARS.

RIVETS THRO. FRAMES & SHELL TO BE NOT MORE THAN 6 DIA. APART NOR LESS THAN 5/16 DIA. THROUGHOUT. SPACING OF RIVETS IN COAL BUNKER BULKHEADS WHICH ARE MADE TO TAKE OIL TO BE 3/4 DIA. APART CENTRE TO CENTRE AND AS PER SECTION 69, PAR. 10, OF RULES.

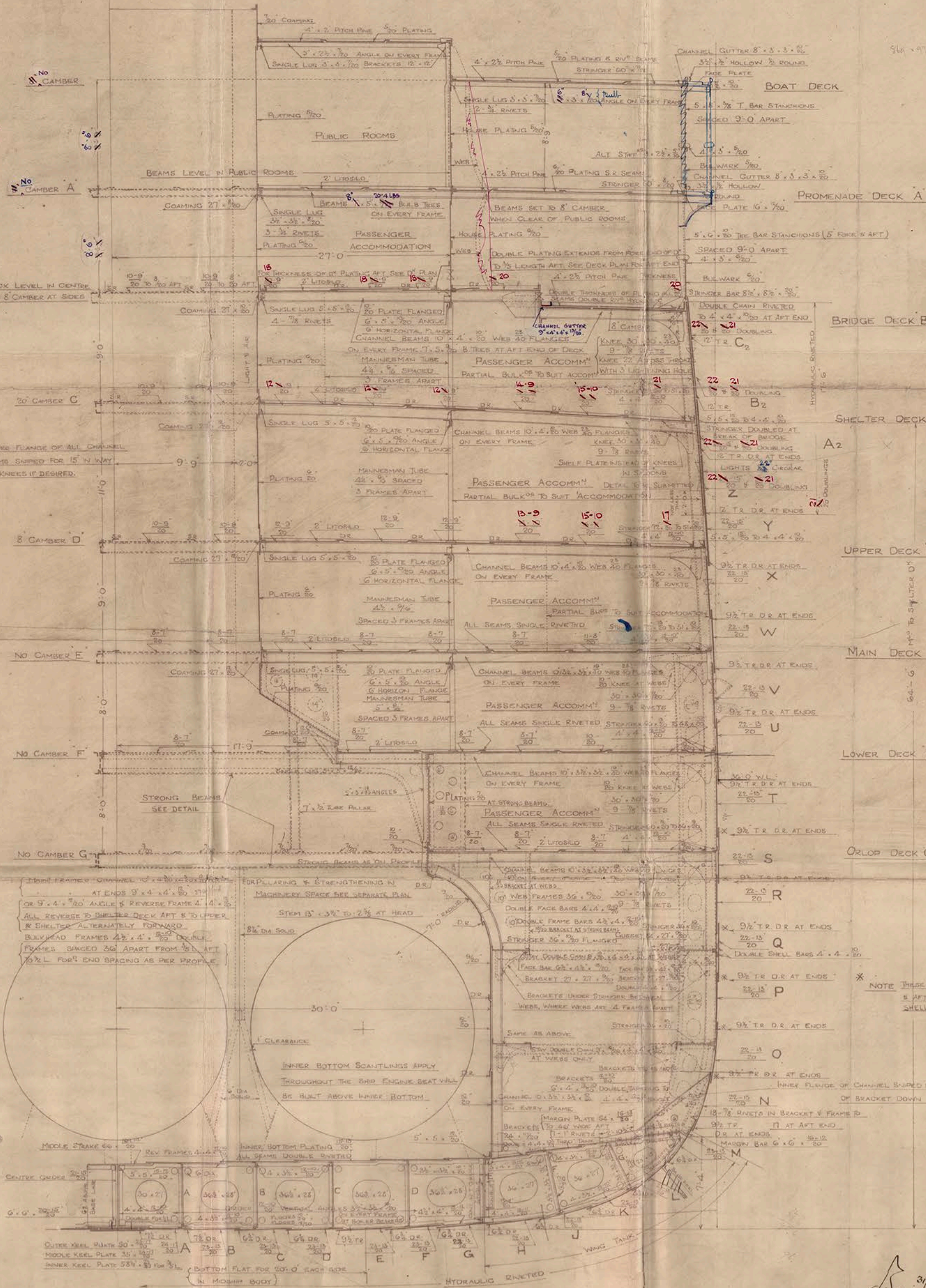
BEAMS OF SIDE PLATING TO BE TREBLE RIVETED FOR 1/2 LENGTHS AND SHIPS, EXCEPT WHERE QUADRUPLE RIV. BEAMS ARE REQUIRED DOUBLE AT ENDS.

NOTE THESE BEAMS ARE TO BE QUAD RIV. IN END 8 AFT BODIES FOR EXTENT SHOWN ON SHELL EXPANSION.

INNER FLANGE OF CHANNEL SHIPED FROM 12 BELOW TOP OF BRACKET DOWN TO FOOT IF DESIRED.

18-1/2 RIVETS IN BRACKET & FRAME TO 17-1/2 TR. D.R. AT AFT END. D.R. AT ENDS. MARGIN BAR 6 x 6 x 20.

WING TANK



31/12

1.
RETAIN
J. BROWN & Co
No 409.

MIDSHIP SECTION
"AQUITANIA"

CLS 34050

PLAN. No 1.



© 2018

Lloyd's Register
Foundation

LR FA-1840-Y-3