

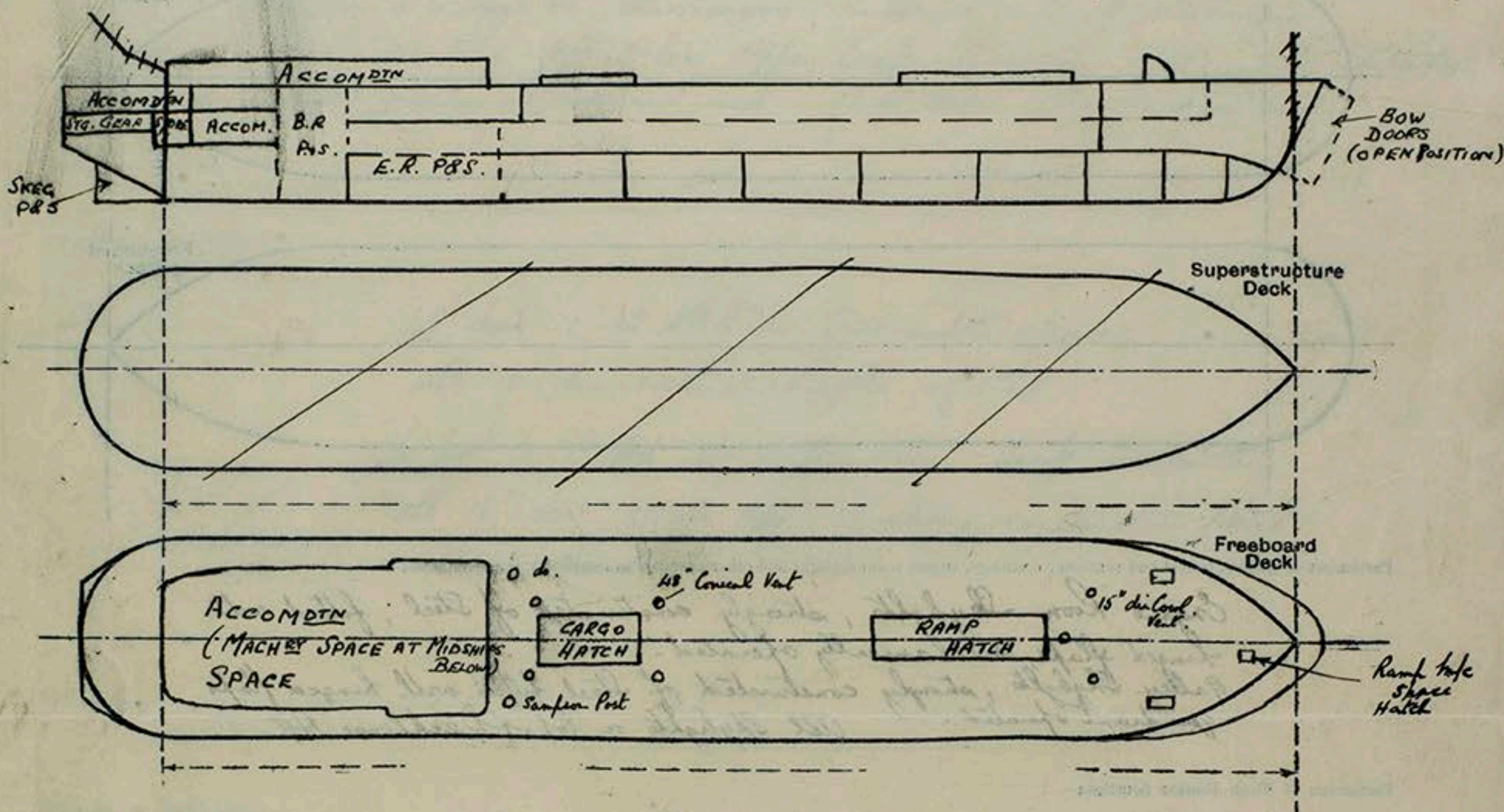
Lloyd's Register of Shipping.

SURVEYS FOR FREEBOARD.

(CONDITIONS OF ASSIGNMENT.)

Ship's Name EMPIRE CEDRIC Port of Survey London
 Official Number 181506 Surveyor's Signature C. Lloyd Roberts
 Nationality and Port of Registry British, London Date of Survey 28th Oct. 1946

Disposition and dimensions of superstructures, trunks, deckhouses and machinery casings to be inserted in the diagrams and tabular statement:—



Particulars of Superstructures, Trunks, Casings, Deckhouses.

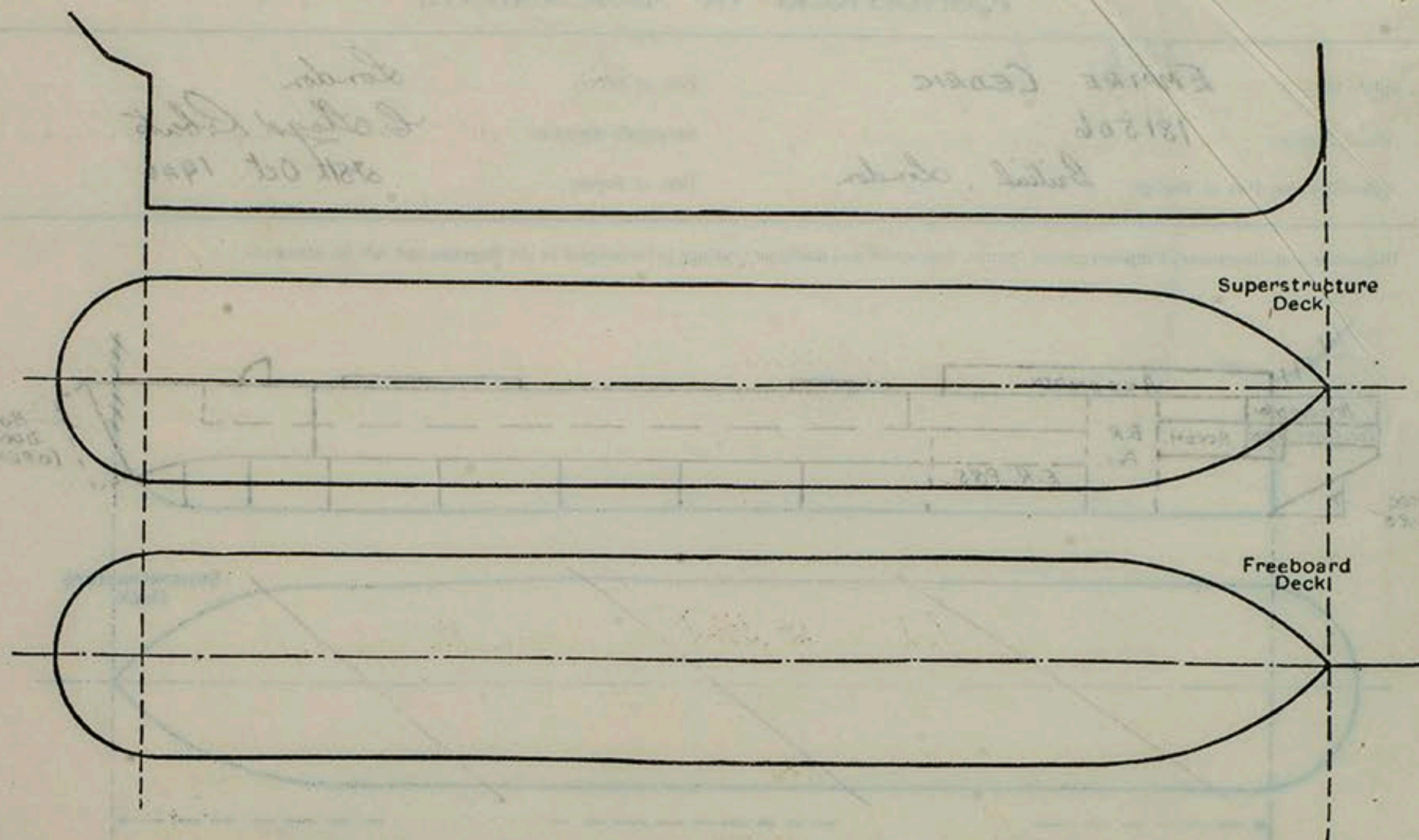
	Coaming	Plating	Stiffeners	Spacing	End Attachments of Stiffeners	Size of Openings	Height of Sills	Height of Casings
Poop Bulkhead ...								
Raised Quarter Deck Bulkhead ...								
Bridge, After Bulkhead ...								
Bridge, Forward Bulkhead ...								
Forecastle Bulkhead ...								
Trunk, Aft ...								
Trunk, Forward ...								
Exposed Machinery Casings on Freeboard or Raised Quarter Decks ...								
Exposed Machinery Casings on Superstructure Decks ...								
Machinery Casings within Superstructures not fitted with Class I Closing Appliances ...								
Deckhouses on Flush Deck Ships ...	✓	3/16" x 1/4"	3x2" x 40x60 L	2'-0"	Plts at top Qty Box all at 6th	2 P4 55 5' 7 3/4" 1 P4 15 5' 0" 2 3/4"	1'-3"	7'-9"

Particulars of Closing Appliances (state if capable of being manipulated from both sides).

Poop Bulkhead ...	
Raised Quarter Deck Bulkhead ...	
Bridge, After Bulkhead ...	
Bridge, Forward Bulkhead ...	
Forecastle Bulkhead ...	
Exposed Machinery Casings on Freeboard or Raised Quarter Decks ...	
Exposed Machinery Casings on Superstructure Decks ...	
Machinery Casings within Superstructures not fitted with Class I Closing Appliances ...	
Deckhouses on Flush Deck Ships ...	Steel W. T. Doors, clip fastenings operated both sides - Sills 1'-3" high ✓

PARTICULARS OF PROTECTION TO OPENINGS, ETC.

The following diagrams should be used to indicate the positions of cargo and coaling hatchways, gangway, cargo and coaling ports, ventilators, companionways, etc., which would affect the seaworthiness of the ship:—



Particulars of fiddle, funnel and ventilator coamings, engine room skylight and other openings in machinery casing tops and their means of closing:—

Engine Room Skylights, strongly constructed of Steel, fitted with hinged flaps, mechanically operated.
Galley Skylight, strongly constructed of Steel fitted with hinged flaps quadrant operated.
All Skylights on top of Deckhouse Aft. ✓

Particulars of Flush Bunker Scuttles:—

None fitted ✓

Particulars of Companionways:—

Two on Foredeck - strongly constructed of Steel with Steel W. T. Doors operated both sides - Sills 18" high

Particulars of Ventilators in exposed positions on freeboard and superstructure decks:—

All ventilators are situated on the Upper Deck or deckhouse top and are strongly constructed of steel & are as follows:—

- ① Square & Rectangular Vents varying in size from 6" x 6" square to 28 1/2" x 7" rectangular fitted with mushroom Type Cowl secured to the coaming by set pins. Height of coaming 11" above Upper Deck. - Laced Canvas covers supplied to completely enclose coaming & cowl.
- ② Gooseneck Ventilators 5" x 5" - 6" to mouth fitted with plugs & canvas covers ✓
- ③ Normal Cowl Type Ventilators 15" dia - coaming 2'-6" above Upper Deck fitted plugs & canvas covers.
- ④ 2 in N° mushroom Top Vents on Samson Posts - 28'-0" above Deck
- ⑤ 4 in N° - 48" dia Conical Top Vents of strong construction fitted steel lids & canvas covers.

Particulars of Air Pipes in exposed positions on freeboard, raised quarter, or superstructure decks:—

Ballast Tank Vents - 26 in N° (13 P & 13 S) 3 1/2" dia with N.R. Valve on ship's side 2'-0" below Upper Dk.
2 - 2" dia to Cofferdam fitted in the same manner
2 - 3" G.N. to F.W. tanks - mouth 1'-10" above Upper Dk.
4 - 2 1/2" G.N. to After Peaks - " 1'-10" " " "
4 - 2" G.N. to O.F. Settling Tanks - " 1'-10" " " "
5 - 2" G.N. to Oil & F.W. Tanks - " 1'-10" " " "

} all fitted with Gauges or wood plugs & Canvas Covers.

Particulars of Gangway Cargo and Coalig Ports:—

Bow Doors at Forward End forming Stem when closed
Watertight Ramp hinged up abaft these doors when doors
are closed - i.e. at sea

Particulars of Scuppers and Sanitary Discharge Pipes:—

2" Scuppers in Stringer plate of Upper Dk. discharging overside
6" below deck thro' M.S. bends.

G.M. or M. Steel Storm Valves fitted from W.C.'s, Washplaces,
Pantries & Galleys &c. discharges - inboard end of discharges
not more than 8ft below Upper Deck at centre - discharging thro' ship'sides.
Lowest position of outboard end - 14ft below Upper Deck at centre

Particulars of Side Scuttles:—

12 port & 12 stbd in Accomdn spaces
all 10" dia with deadlights of Steel.

6 port & 8 stbd in upper tween deck Accomdn.
all 16" dia, escape type, of strong construction fitted
with steel deadlights.

Vertical distance of Sill of lowest Side Scuttle above top of keel

23' 6"

Particulars of Guard Rails:—

Angle Stanchions 8 feet apart
with three rows of steel wires stretched between

Particulars of Gangways, Lifelines, etc.:—

Life lines provided for fitting from Deckhouse Aft
to Companionways forward - Access provided through
tween decks in addition.

Particulars of Freeing Arrangements.

	Length of Bulwark	Height of Bulwark	Size of Freeing Ports	Number each side	Area each side	Rule area each side
After Well			Open Rails			
Forward Well						

State position of each freeing port (After Well:—

(F. and A. position and height above deck edge) (Forward Well:—

State whether the freeing ports are fitted with shutters, bars, or rails, and give particulars of such:—

Additional area where sheer is less than standard.

PARTICULARS OF PROTECTION TO OPENINGS, ETC.

HATCHWAYS ON FREEBOARD AND SUPERSTRUCTURE DECKS.					
Description of Hatchway	After Cargo Hatch	Forward Cargo Hatch			Forward Hatch
Dimensions of Hatchway	26' x 13' 6"	48' 1/2" x 13' 0"			3' x 3' 6"
COAMINGS	Height above Deck ... 2' 0" Thickness Sides ... 3/8" Thickness Ends ... 3/8" Stiffeners ... 5-9 1/2" x 1/2" x 1/2" Brackets, Stays ... (7" BA at ends)	Height above Deck ... 1' 6" Thickness Sides ... 3/8" Thickness Ends ... 3/8" Stiffeners ... 7" BA Brackets, Stays ... 7" BA on off end with rib at centre.	3-2" dia rod stays each side on each hatch		6"
HATCH BEAMS	Number ... 4 Spacing ... 5' 3" Scantling and Sketch ... 5" x 12" x 12" Bearing Surface ... 3"	Number ... 11 Spacing ... 4' 0" Scantling and Sketch ... 7" x 8" Bearing Surface ... 6 1/2" x 40"			✓
FORE AND AFTERS	Number ... Spacing ... Unsupported Lengths ... Scantling and Sketch ... Bearing Surface ...	None None None None None			✓
HATCH COVERS	Material ... Wood Thickness ... 2 1/2" How fitted ... F&A Bearing Surface ... 2 1/2"	Material ... Wood Thickness ... 2 1/2" How fitted ... F&A Bearing Surface ... 2 1/2"			Steel 3/8" 6 toggles 1-3" apart
Spacing of Cleats	24"	24"			✓
Number of Tarpaulins	2	2			✓
*Are wood fore and afters steel shod at all bearing surfaces? ✓ Are battens and wedges efficient and in good condition? ✓ Are tarpaulins in good condition and in accordance with rule requirements? ✓ Are lashings provided in accordance with rule requirements? ✓ - locking bars with satisfactory tightening arrangements.					

Particulars of any special features:—

Endorsement at first survey and at surveys for renewal of Certificate:—

The fittings and appliances are in accordance with the particulars shown on this form (or as now modified) and are in good condition.