

Boiler No 64.

Messrs T. R. Dowson & Co

Newcastle on Tyne



8/5 Babu Standard

Newcastle-on-Tyne.

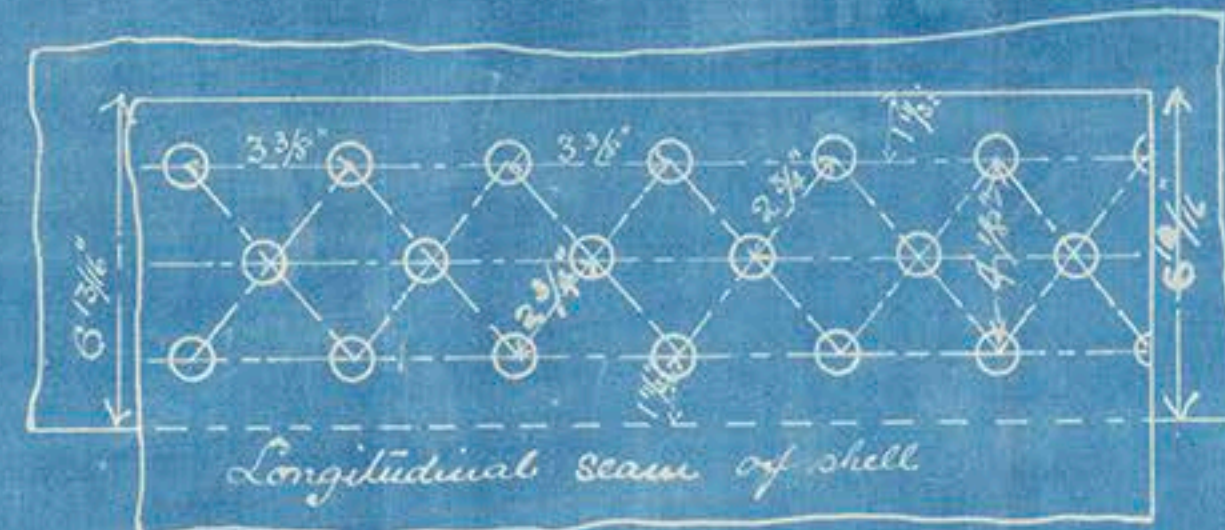
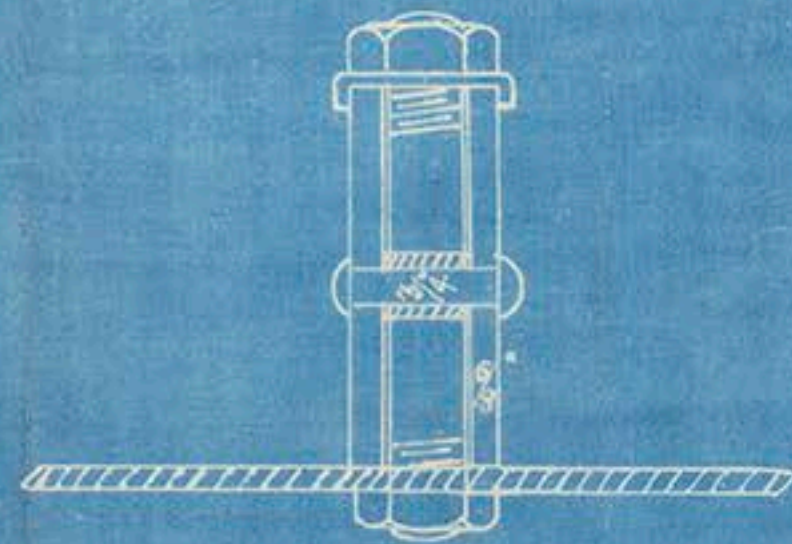
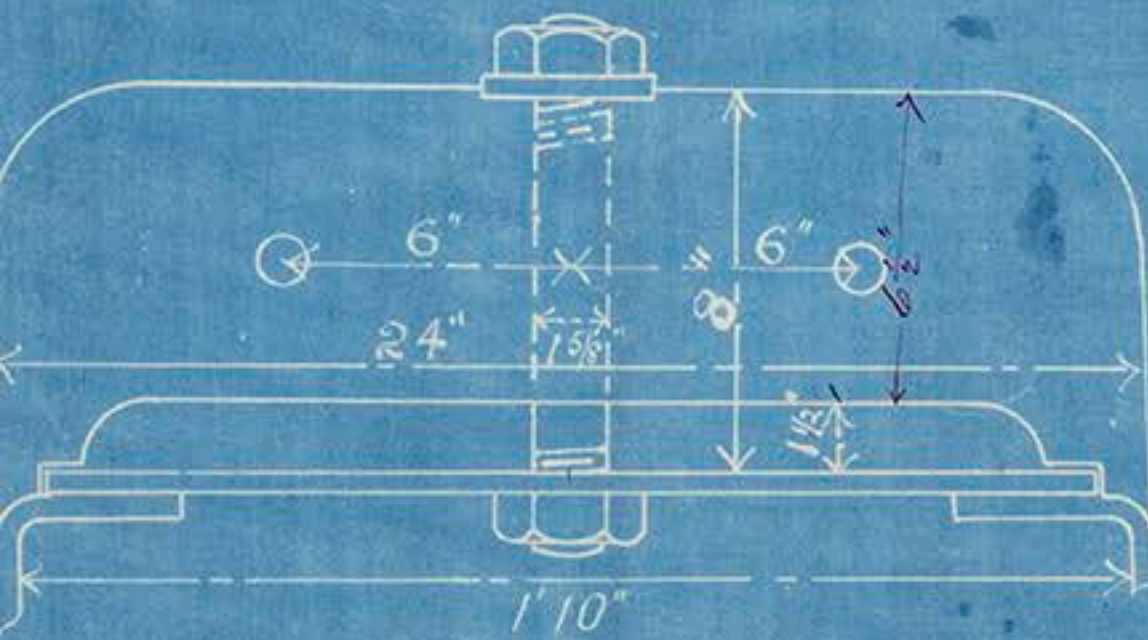
No 3442

Recd 29/8/07



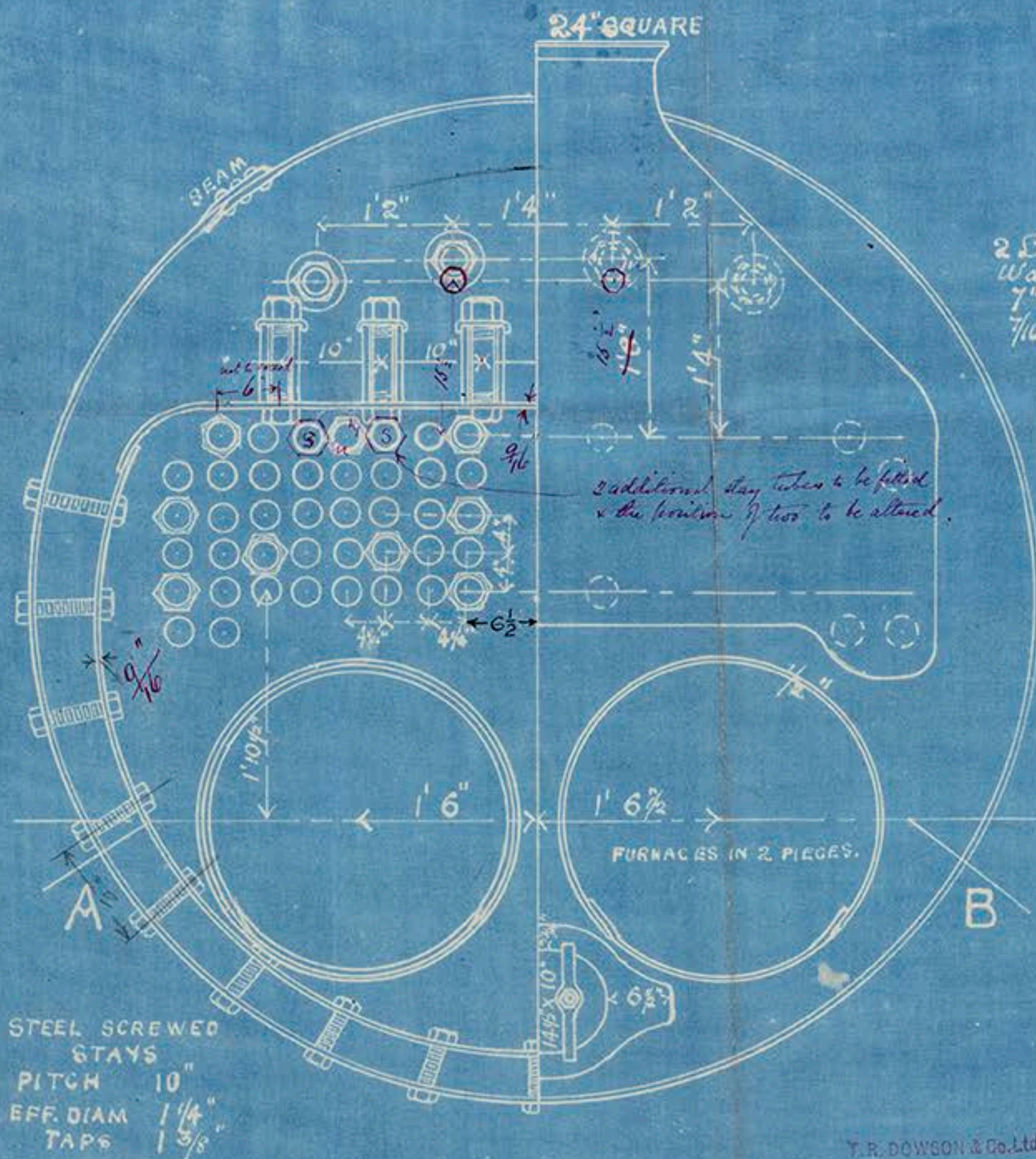
6 Combustion chamber Door Stays  
 Diam.  $1\frac{5}{8}$ "  
 Thickness of plate  $\frac{5}{8}$ "  
 Pitch 10"

27: 2: 07

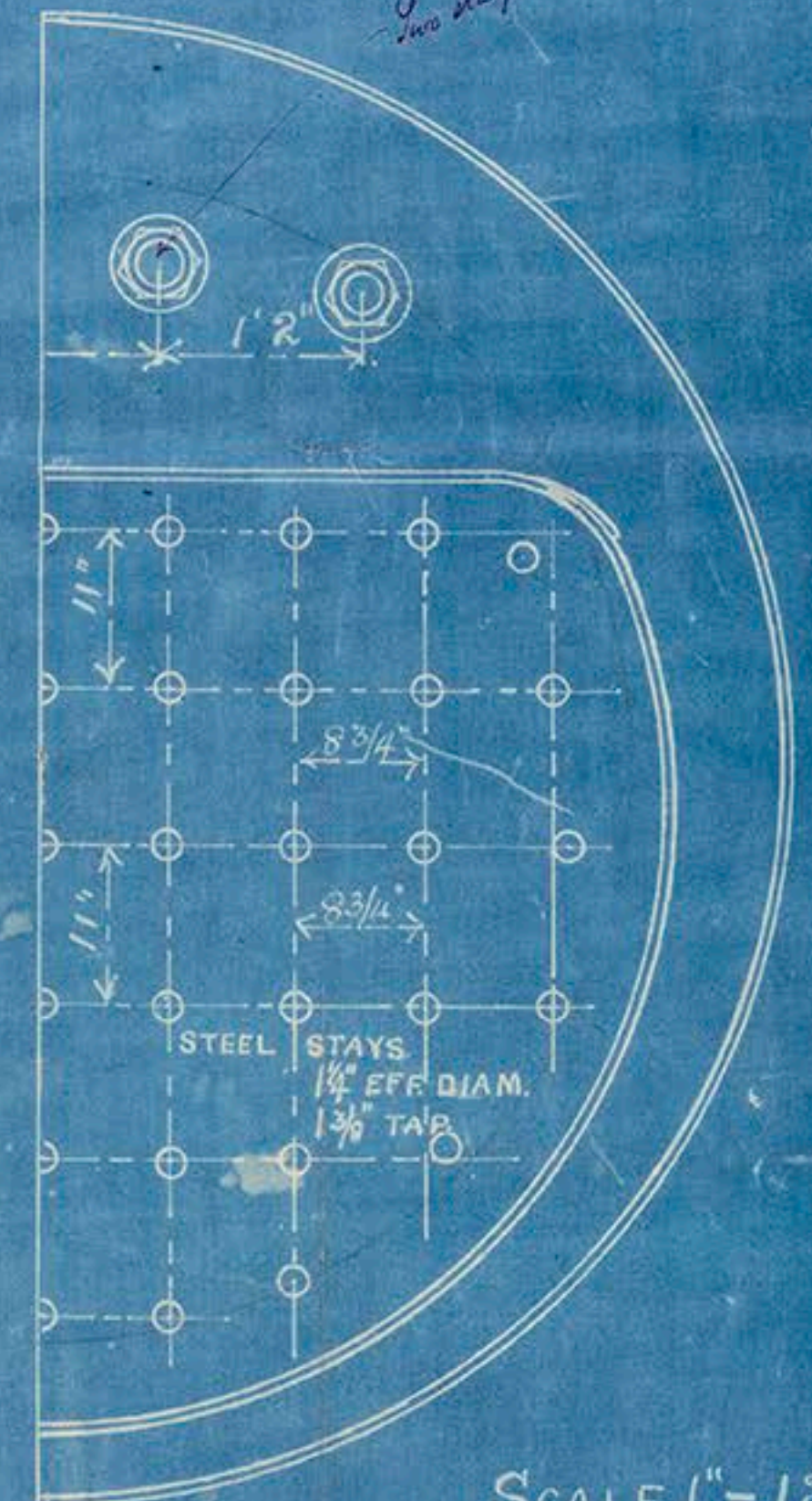
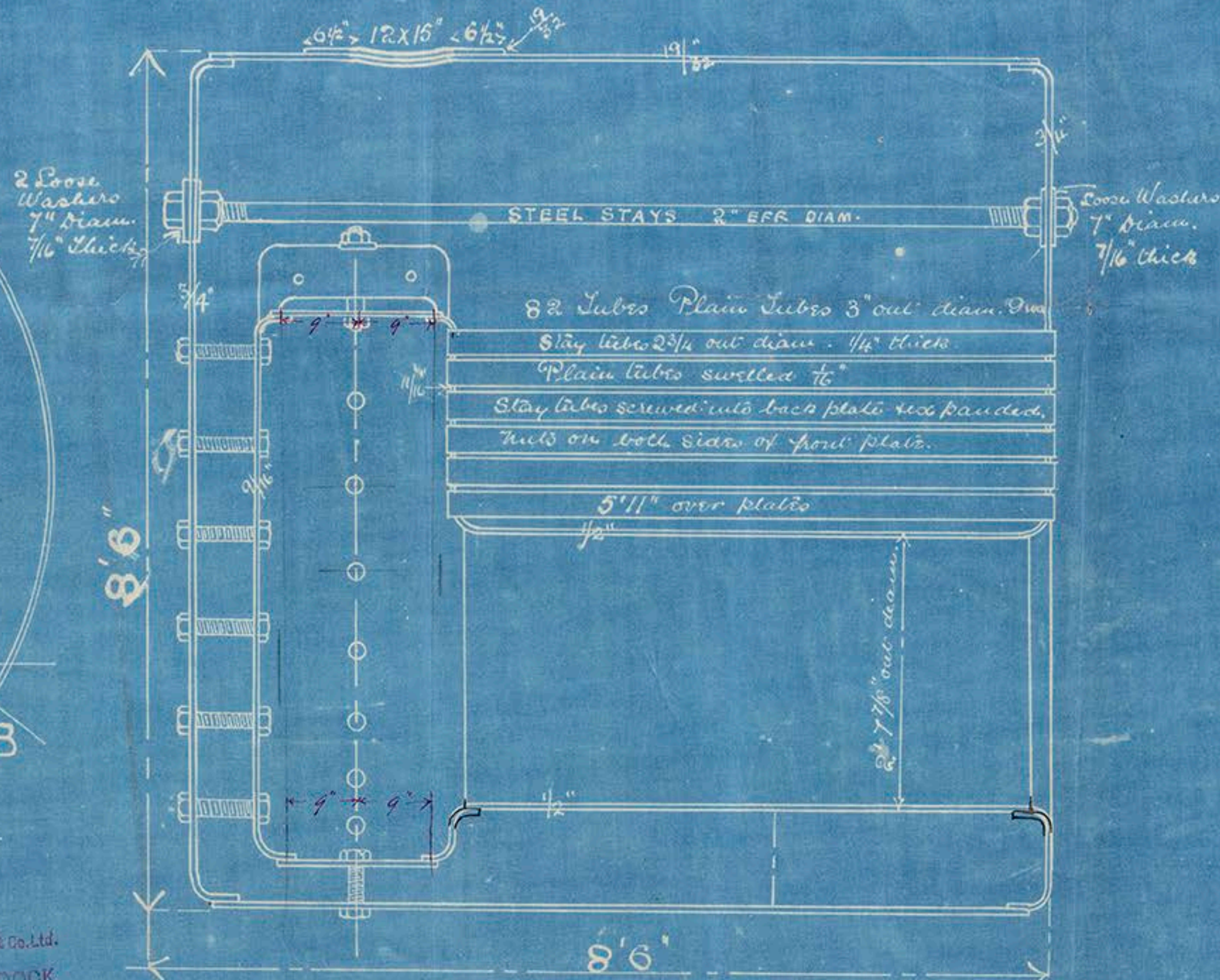


Thickness of plate  $\frac{19}{32}$ "  
 Diam. of rivets  $\frac{7}{16}$ "  
 Pitch  $3\frac{3}{8}$ "  
 Diagonal  $2\frac{3}{4}$ "  
 Lap  $6\frac{13}{16}$ "

Longitudinal seam of shell shells rivetted holes  $3\frac{3}{8}$ " P.  $6\frac{13}{16}$ " Lap  
 Shell to ends single rivetted From A to B round bottom 1" holes  
 $2\frac{3}{16}$ " P. 3" Lap.  
 From A to B round tops, 1" holes  $2\frac{3}{4}$ " P. 3" Lap.  
 All other seams single rivetted 1" holes,  $2\frac{3}{16}$ " P. 3" Lap.  
 All plates "Birrens Martin" steel. Rivets of steel.  
 Shell plates 27 to 32 Tons.  
 Stay tubes screwed into back plate & expanded,  
 Nuts on both sides of front plate.



T.R. DOWSON & Co. Ltd.  
 TYNE DOCK.



SCALE 1" = 12.

HORIZONTAL MULTITUBULAR BOILER 8'6" X 8'6", WORKING PRESSURE 100 LBS PER  $\square$ "  
 GRATE AREA 22.5  $\square$ ' HEATING SURFACE 500  $\square$ '