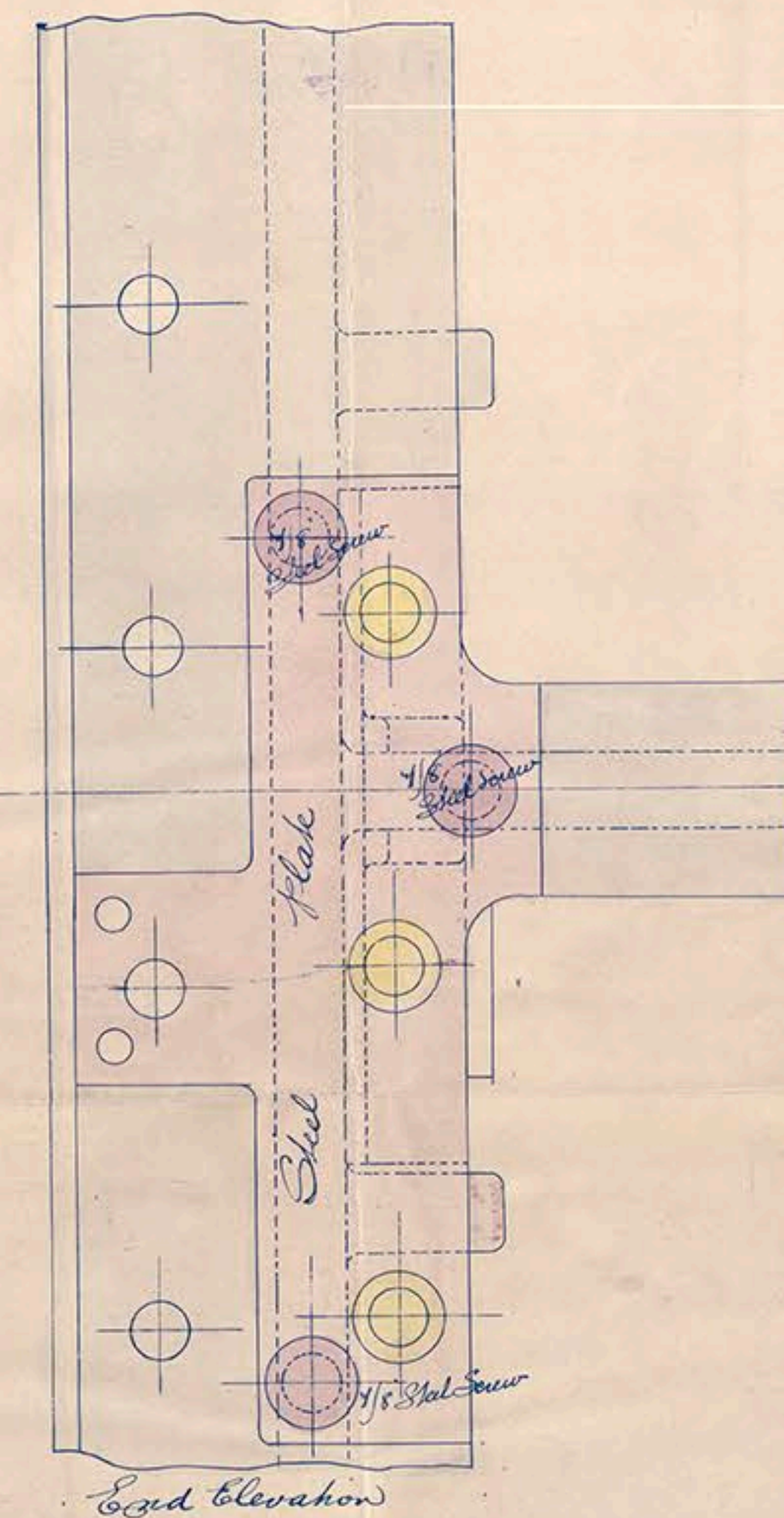
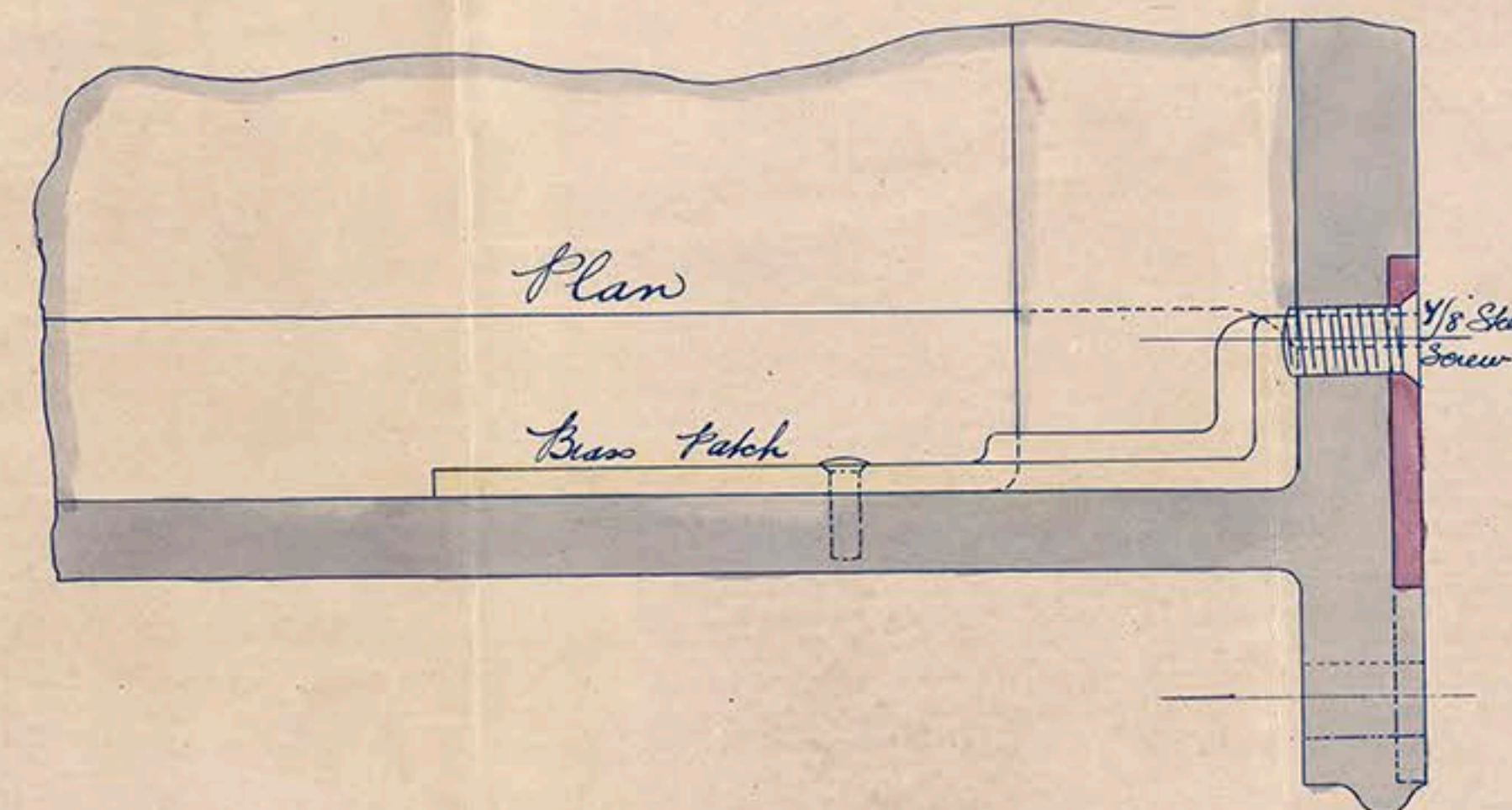
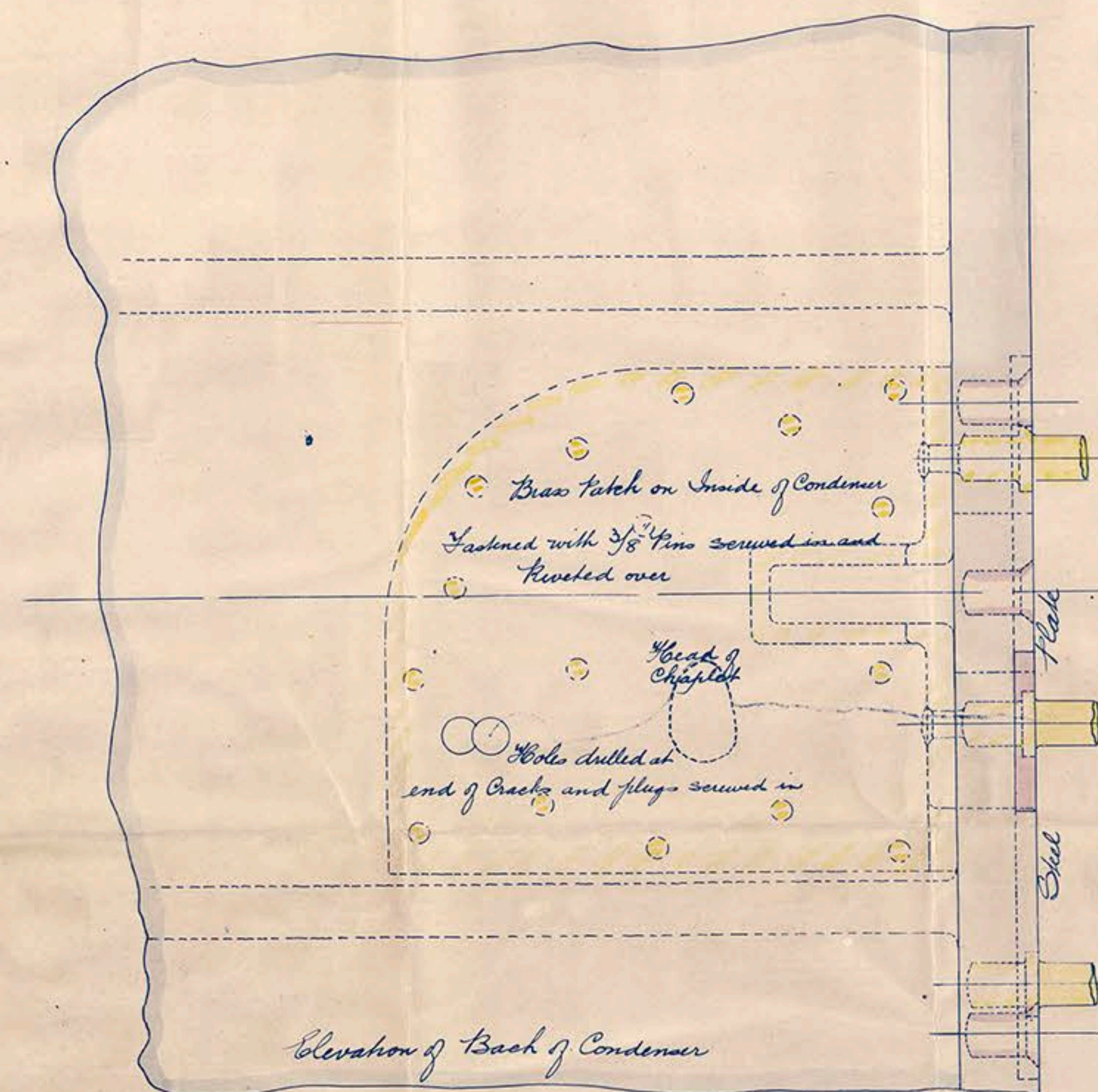
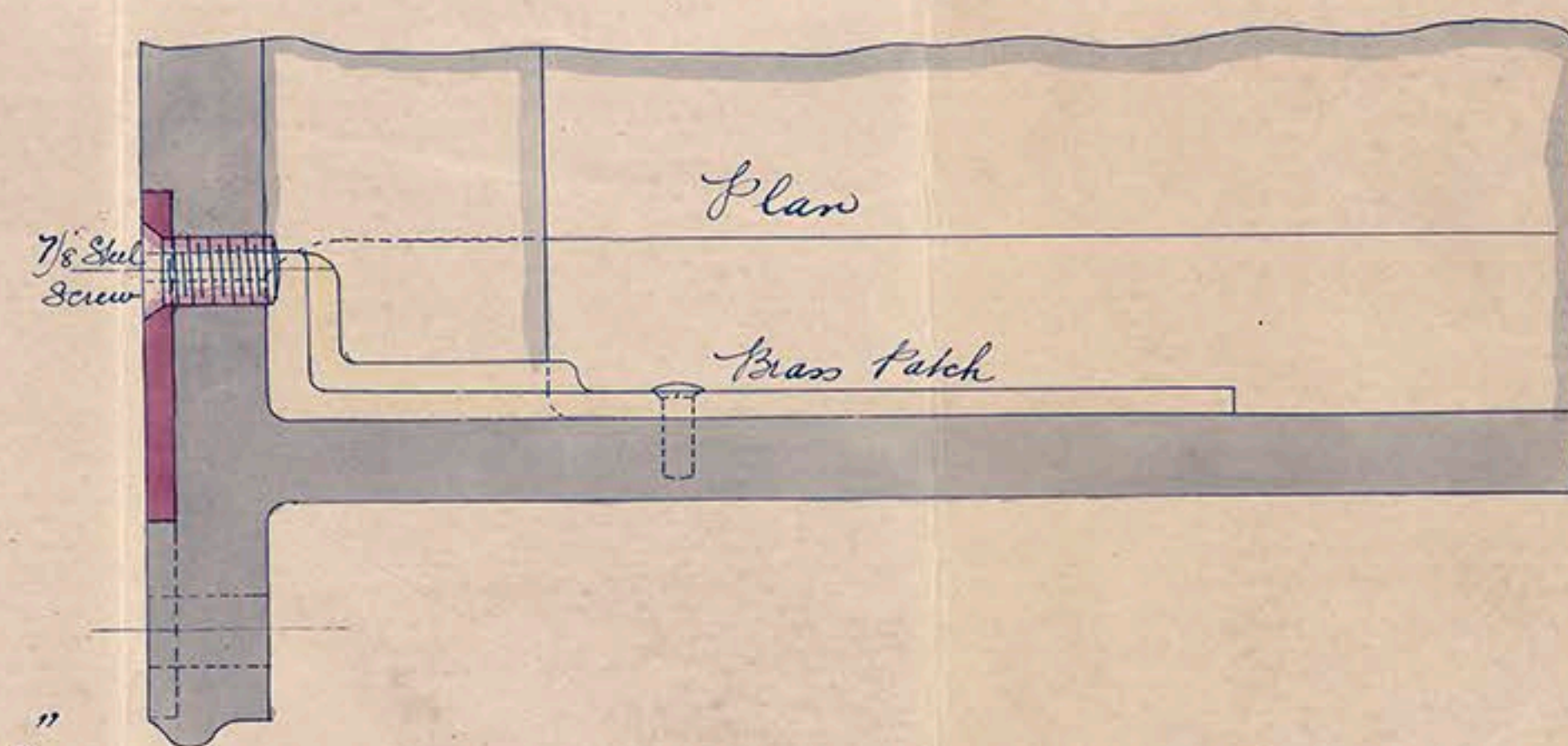
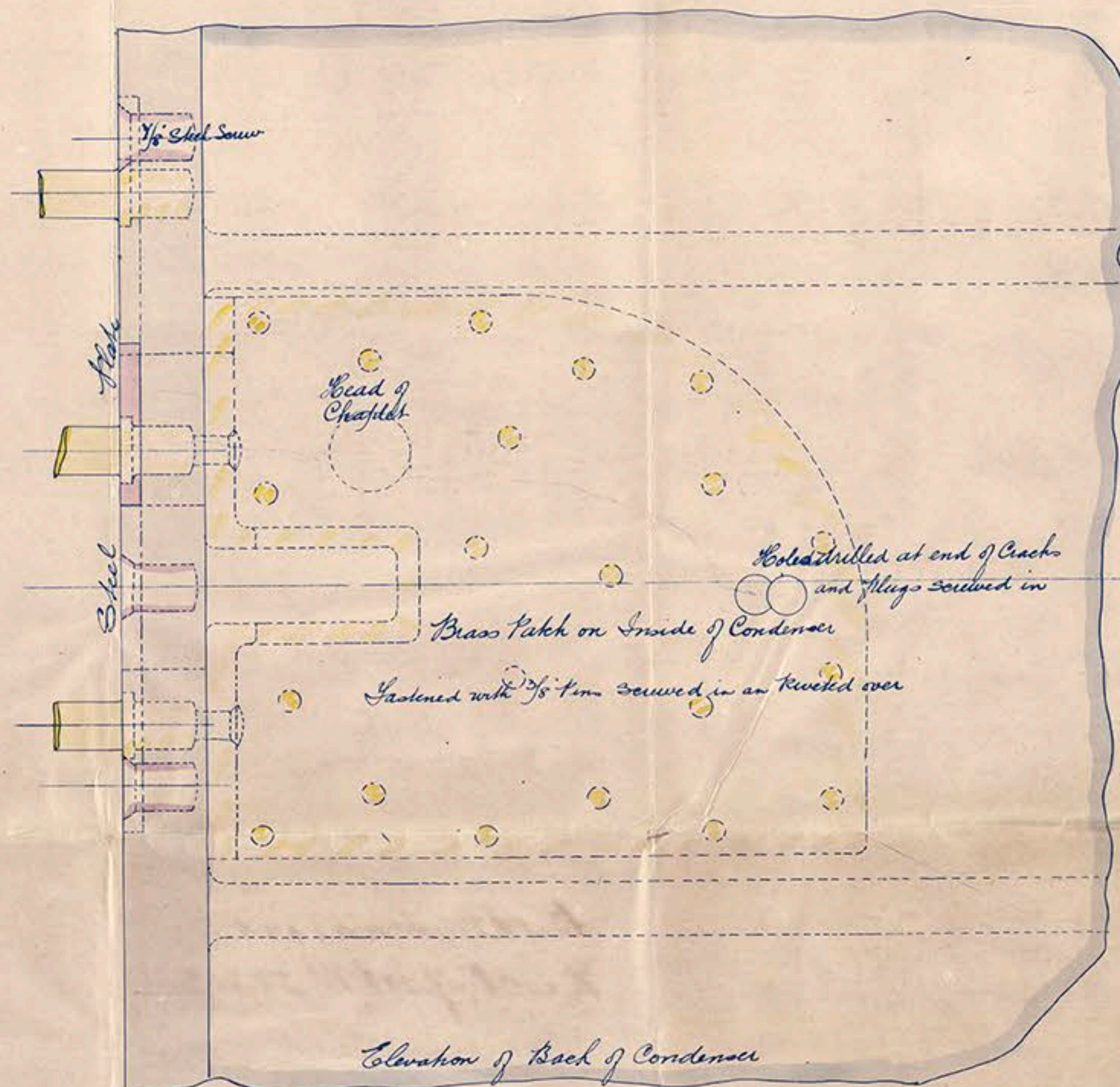


THE WALLSEND  
SLIPWAY & ENGINEERING CO. LTD.  
2267 DATE Jan 28 93

Fore End of Condenser  
Scale 1/2 inch = 1 inch

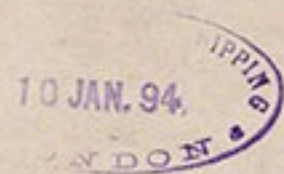
Is "Baku Standard"



Aft. End of Condenser  
Scale 1/2 inch = 1 inch



Baker Standard  
Rock Report No 28302  
For Int of Condensed



© 2018

Lloyd's Register  
Foundation

LR-FAF-SA19-P-10