

Lloyds

DONKEY BOILER. CONTRACT N^o. 387

Messrs Sir W. G. Armstrong Mitchell and Co's Ship N^o. 597

To pass Bureau Veritas requirements
" " Hamburg Law
" " Board of Trade
" " Lloyd's
1" off this

Scale 1" = 1 Foot
2 1/2" x 3 1/2" x 1 1/2"

Materials

Plates Steel
Rivets Steel
Stays Steel
Tubes Iron

THE WALLSEND
SLIPWAY & ENGINEERING CO., LTD
NEWCASTLE-UPON-TYNE
N^o. 1874 DATE March 8 97

Manufactured by Messrs Spencer and Sons Newburn

HEATING SURFACE Sq. Ft.
TUBES = 319
FURNACES = 65
COMBUSTION CHAMBERS = 56
TUBE PLATES = 25
TOTAL 1 BOILER = 465 Sq. Ft. = 42.36 sq. metres
Cub Ft.
STEAM SPACE 1 BOILER = 110
— 1 DOME = 14
TOTAL 1 BOILER = 124 Cub Ft. = 3.5 cu. metres
WORKING PRESSURE 100 lbs. per sq. INCH. = 7 atmospheres
TEST - do - 200 do. do. do. = 14 atmospheres

Plan of Shell Riveting

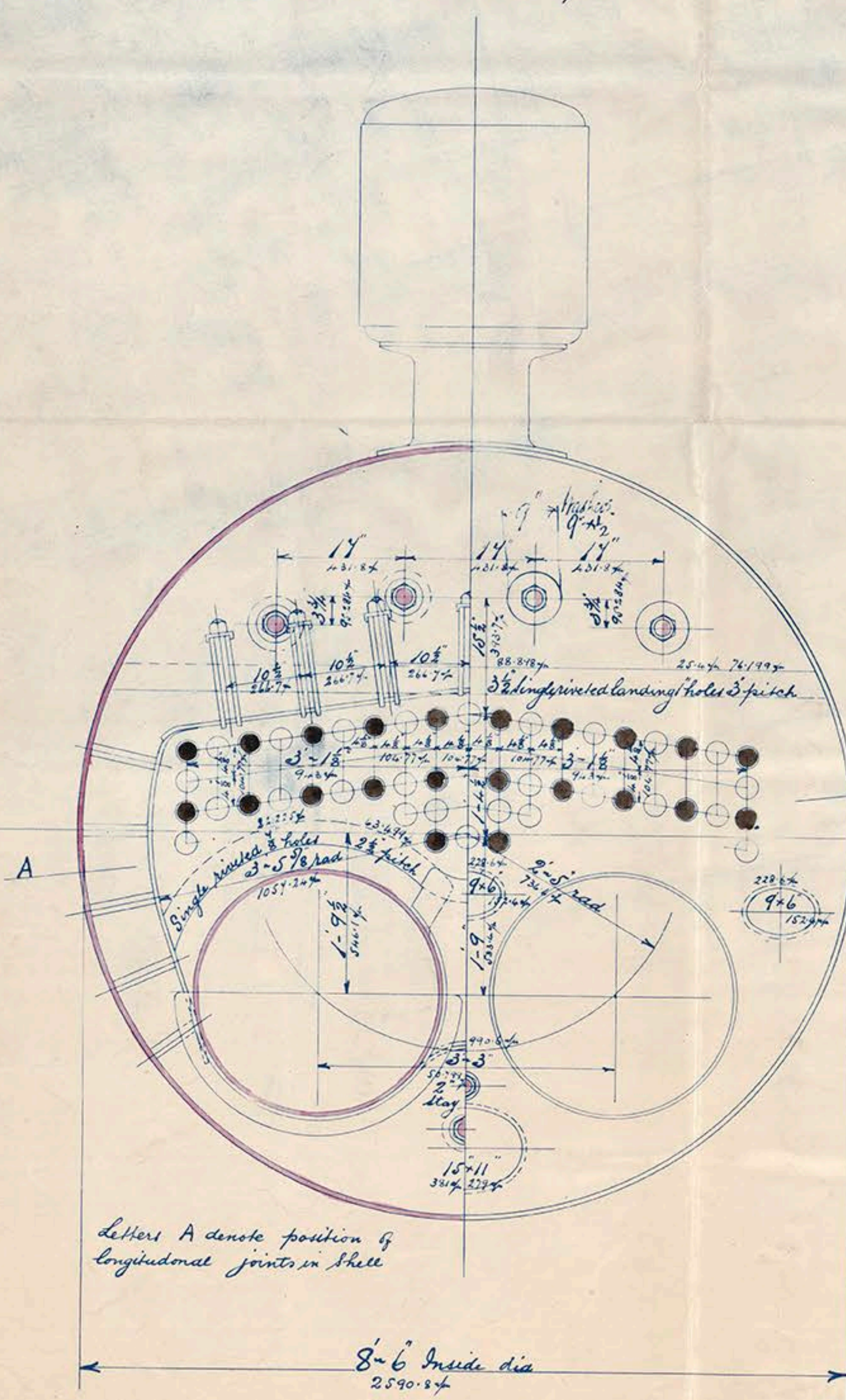
Strength of Joint

Plate 80.26% Lloyds and B.V.

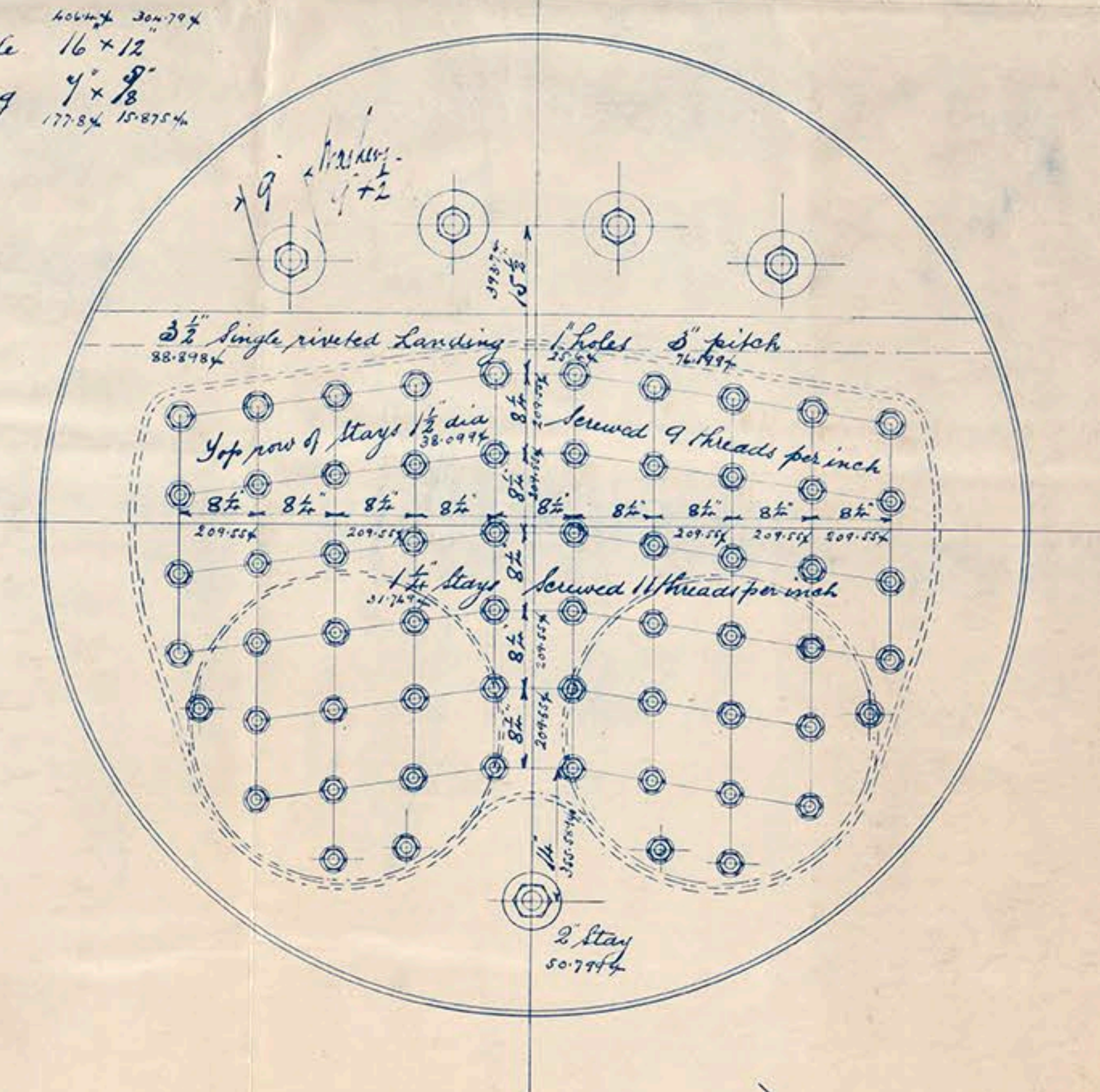
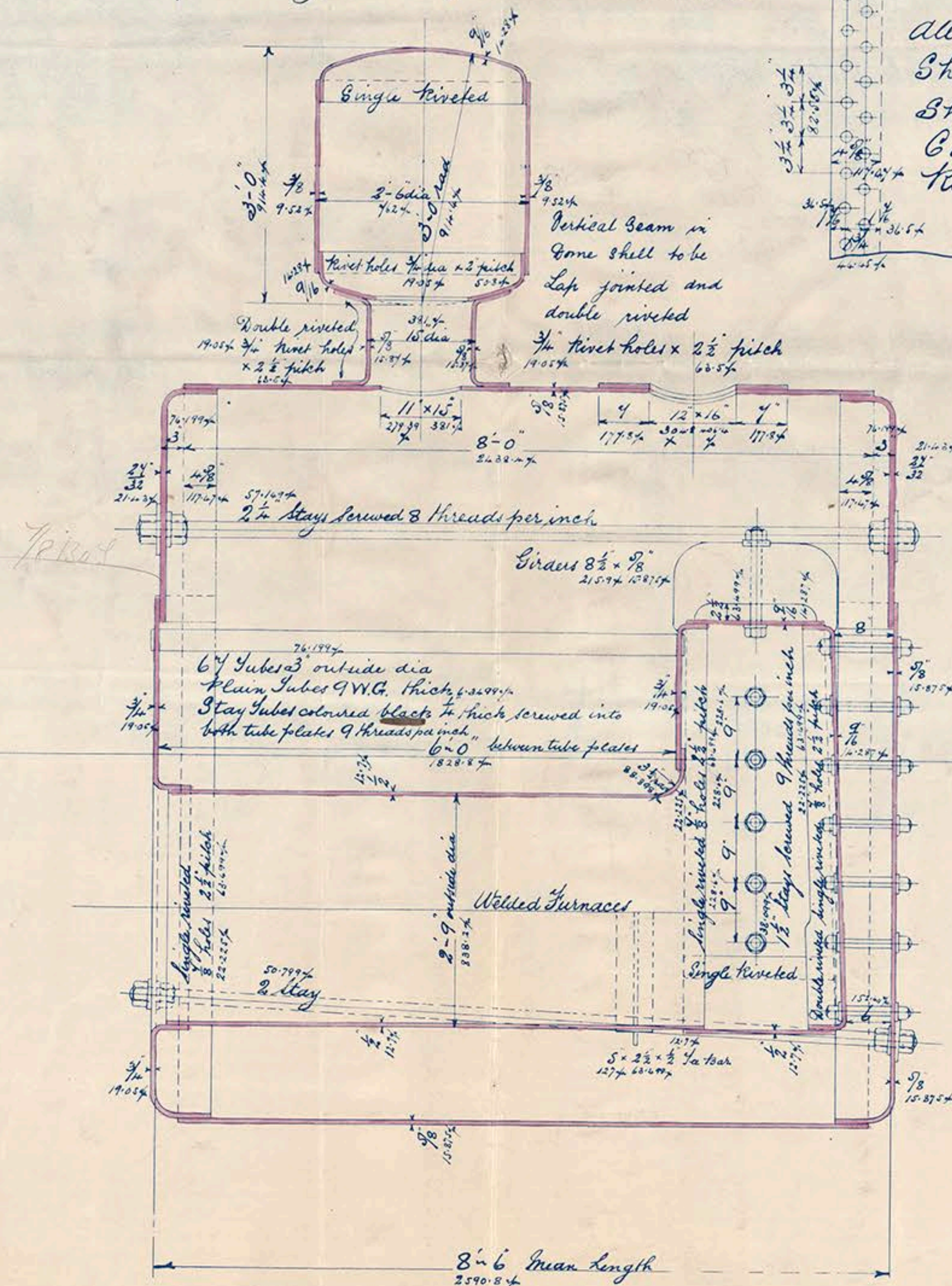
Rivet 49% Lloyds

All holes drilled in place after bending
Shell hydraulic riveted in longitudinal seams & Circumferential End Beam
The other hand riveted
Shell plates 3/8" thick Rivet holes 1 1/2" dia x 4 1/4" pitch
Circumferential Beams double riveted
Rivet holes 1 1/2" dia x 3 1/4" pitch

Manhole 16 x 12
Doubling 7 x 8



Letters A denote position of longitudinal joints in shell



Armstrong Mitchell
8003 nos 597 H/S
Donkey boiler
S.S. "Lake Standard"
100 lbs

395-1
Lloyd's test
200 lbs
23. 8. 92

Howe Report 28382



© 2018

Lloyd's Register
Foundation