

BOILER CONTRACT N^o 387 *Amended*

CONSTRUCTED TO PASS BUREAU VERITAS, HAMBURG LAW, LLOYDS, AND BOARD OF TRADE, REQUIREMENTS

SCALE 1" = 1 FE
25.4 x 304.79 mm
2 off thus

Messrs Sir W. G. Armstrong Mitchell & Co S.S. N^o 597

Plates manufactured by Messrs Spencer & Sons Newburn

Verbally approved by B.O.S. Per Mr Williams
Nov 1892

HEATING SURFACE
TUBES = 1940
FURNACES = 168
COMBUSTION CHAMBERS = 132
TUBE PLATES = 110
TOTAL 1 BOILER = 2350

Sq. Ft. 2 BOILERS 4700
436.82549 METERS

STEAM SPACE 1 BOILER

11.2 atmos
WORKING PRESSURE 160 lbs. per sq. inch.
TEST - do - 320 do. do.
12.4 atmos

MATERIAL
PLATES STEEL
RIVETS do
STAYS do
TUBES IRON

THE WALLSEND
SLIPWAY & ENGINEERING CO. LTD
NEWCASTLE-UPON-TYNE
N^o 1894 DATE March 22-92

Plan of Shell & Firebox

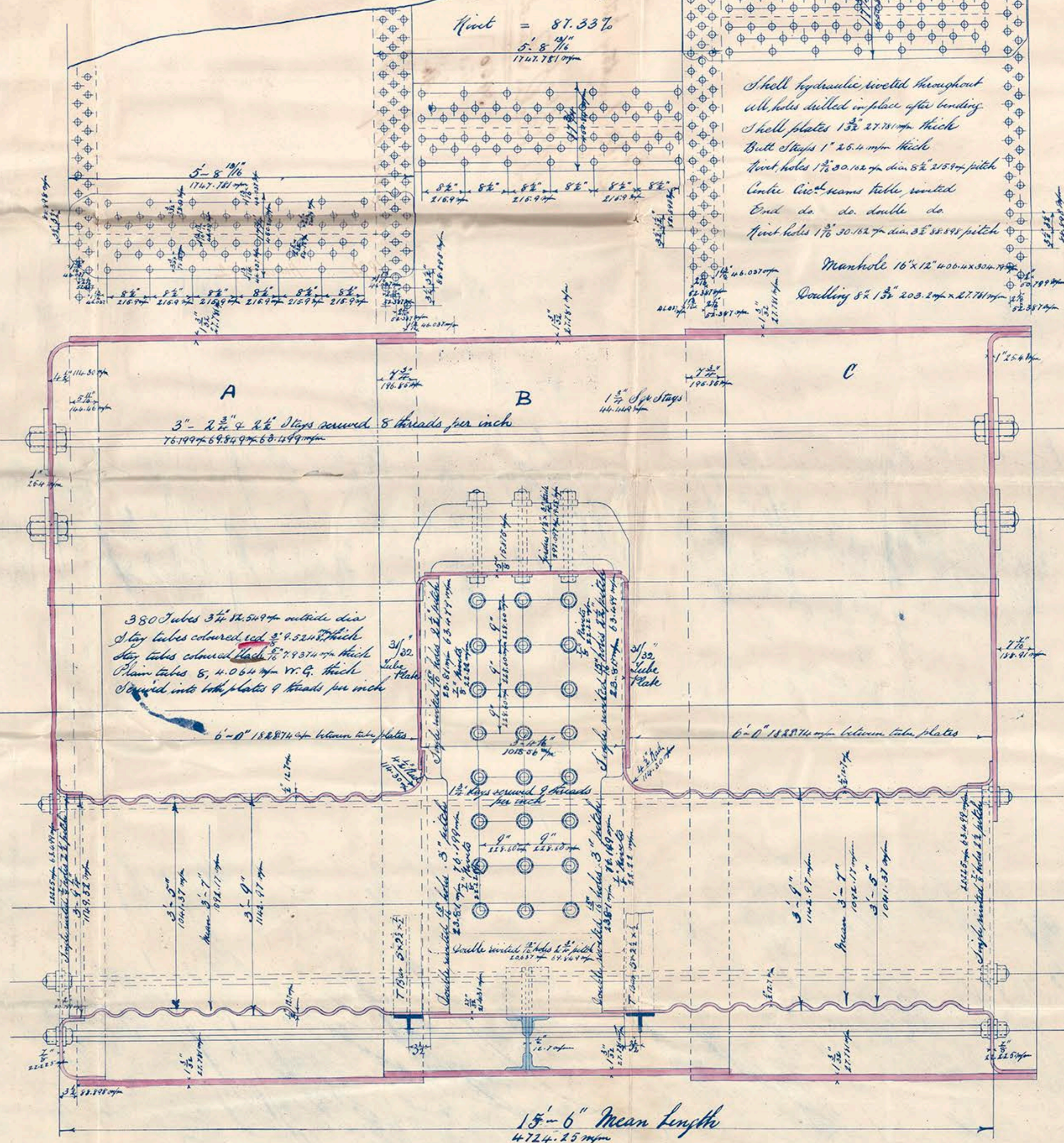
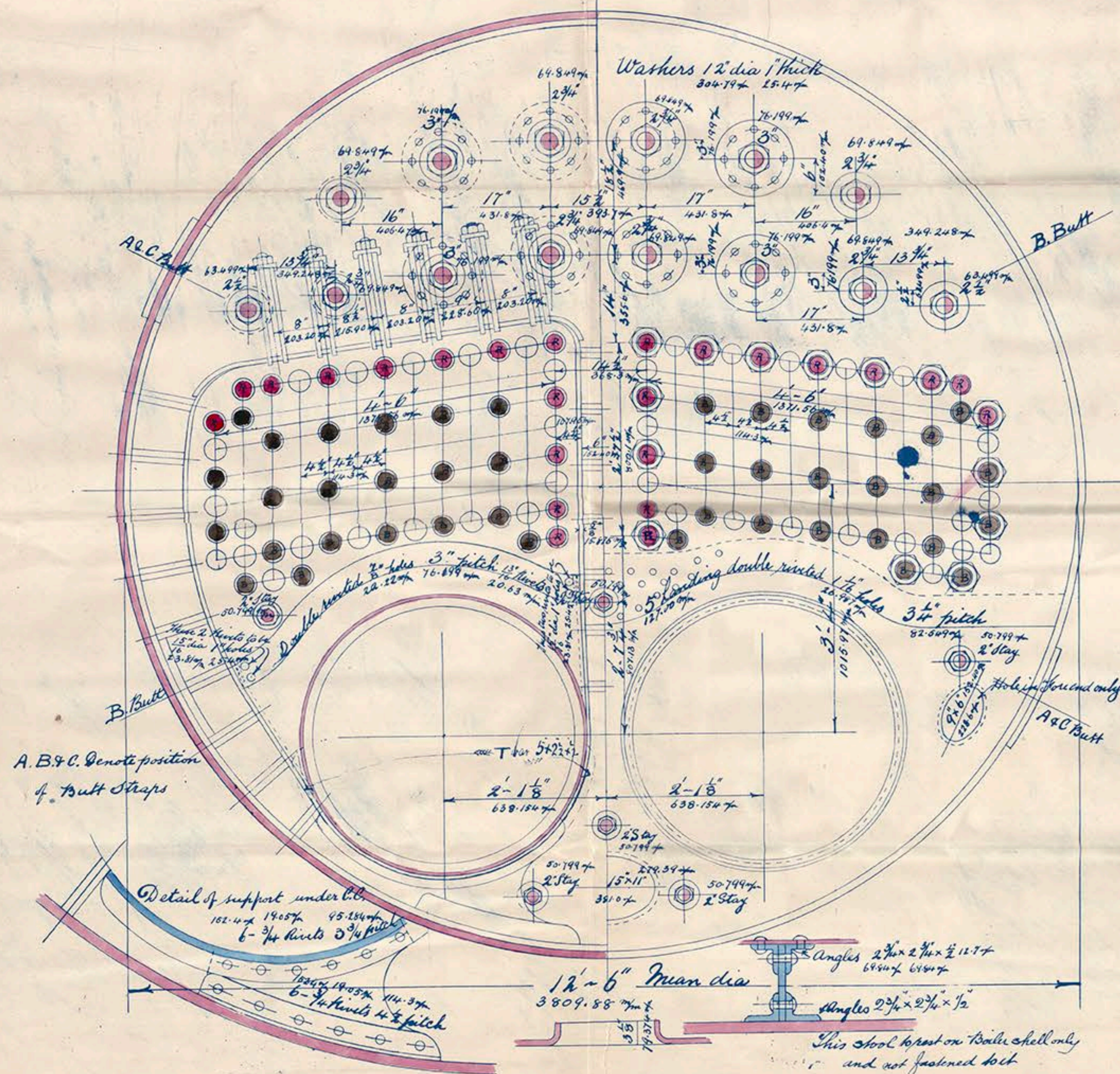
Plate = 86.03%

Fire = 87.33%

5'-8 1/2"
1747.781 mm

Shell hydraulic riveted throughout
all holes drilled in place after bending
Shell plates 13/16" 27.14 mm thick
Butt stays 1" 25.4 mm thick
Fire holes 1 1/2" 38.1 mm dia 8 1/2" 215.9 mm pitch
Under fire holes seams table riveted
End do do double do
Fire holes 1 1/2" 38.1 mm dia 35 3/8" 899 mm pitch

Manhole 16" x 12" 406.4 x 304.8 mm
Doubling 8 1/2" 13" 203.2 x 27.14 mm



Lt. Col. Armstrong Mitchell
No. 597
Co. 384
P. 160 ft
S.S. "Baku Standard"

No. 3950
Lloyd's test
320 lb.
P. 160 ft
22. 8. 92

Stockport No. 28302



©.2018

Lloyd's Register
Foundation