

27/3/77

MIDSHIP SECTION of No 294

DIMENSIONS

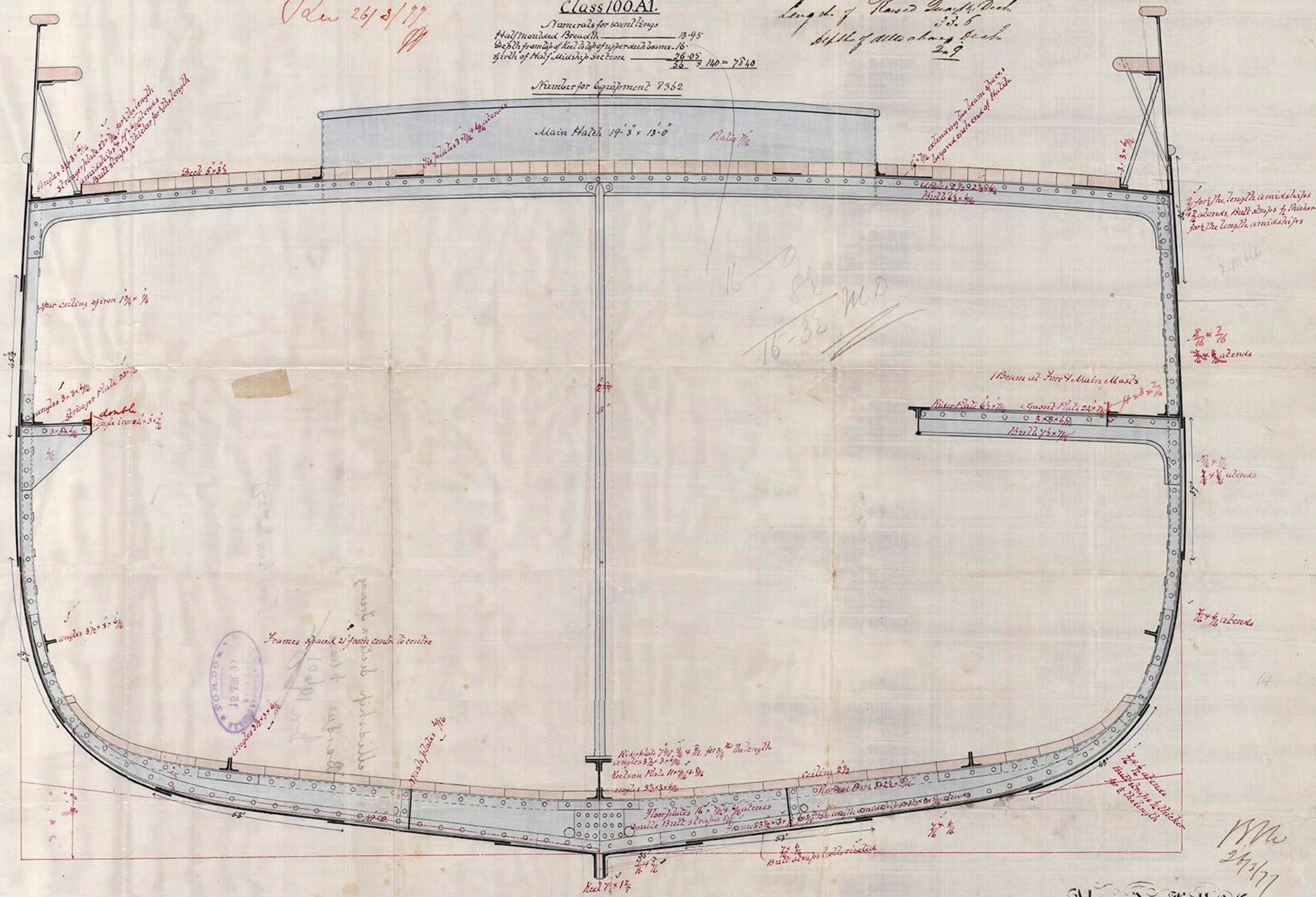
LENGTH BETWEEN PERPENDICULARS	142
BREADTH EXTREME	28
DEPTH IN HOLD	14.5
TONNAGE	under deck 383 tons
TONNAGE	gross 415
TONNAGE REGISTER	399

Class 100A1.

Numerals for scantlings
 Half moulded Breadth 13.95
 Depth from top of keel to top of upper deck beams 16
 Depth of Half Midship Section 26.05
 $38 \times 7 \times 140 = 7840$

Number for equipment 7362

Length of Raised Quarter Deck 33.6
 Depth of upper deck 2.9



SCALE 1/4 INCH TO A FOOT